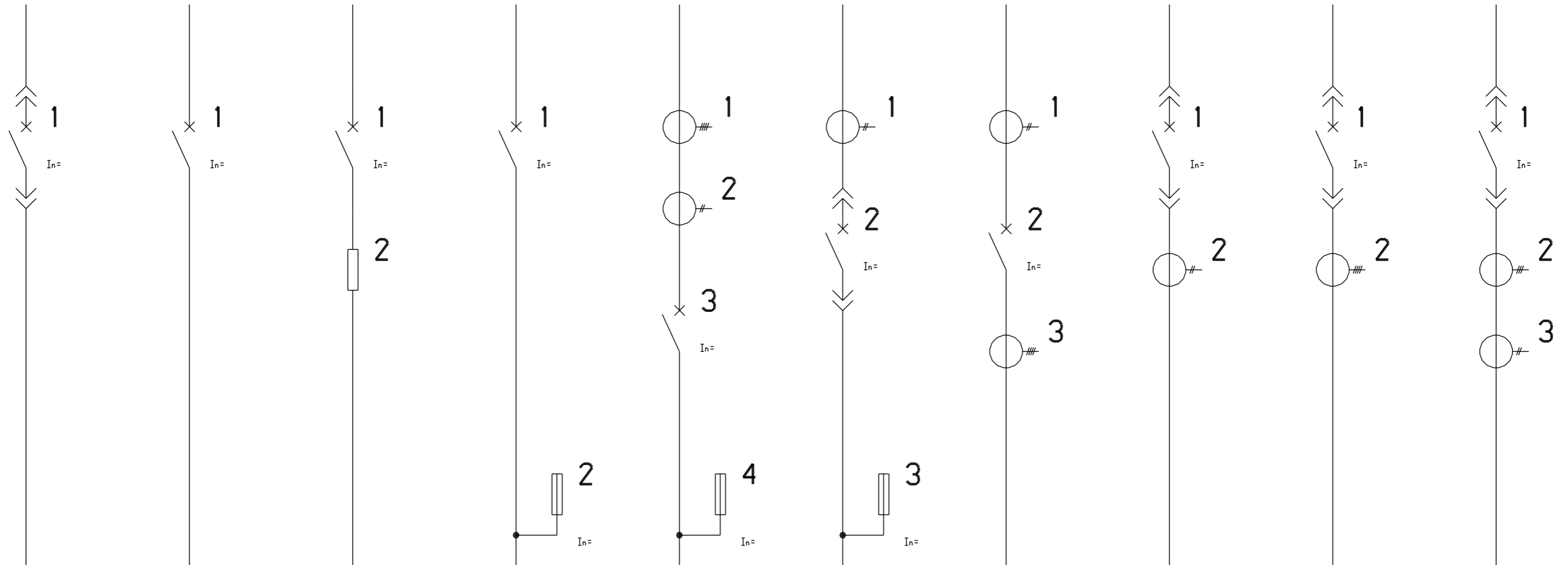
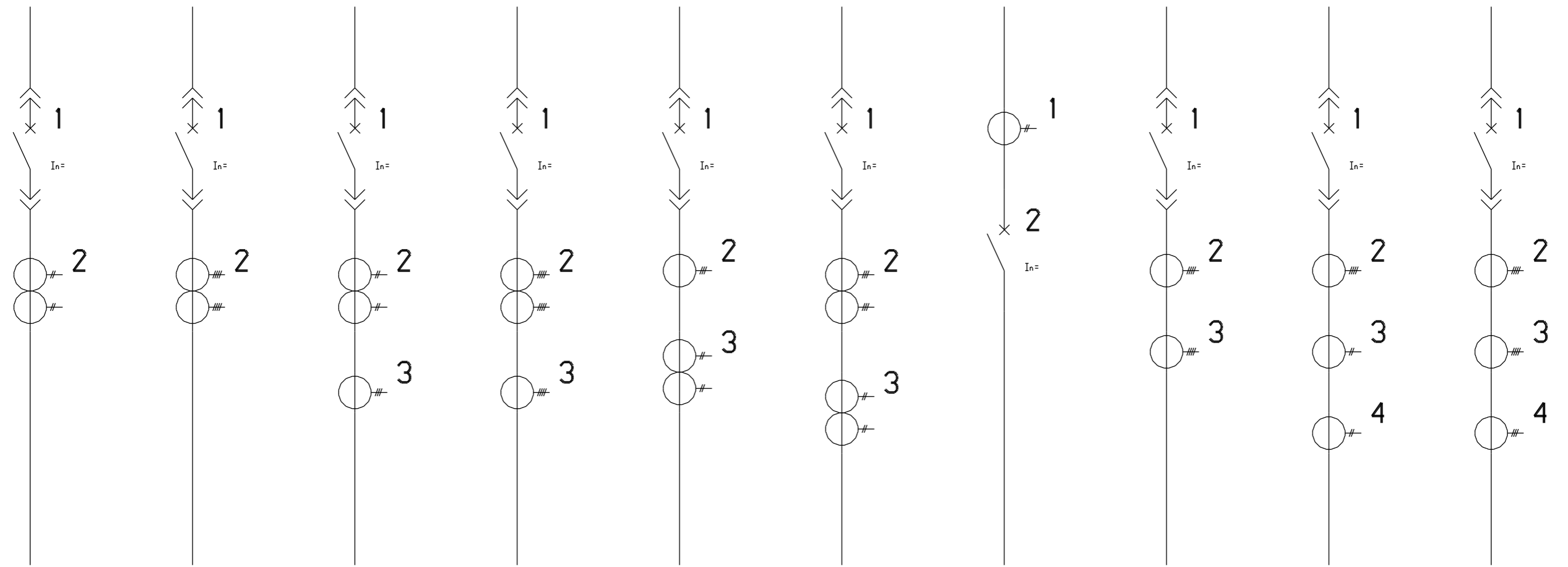


<QM>	QM	QMR	PRQM\FU	PRTATA1QM\FU	PRTA1<QM>\FU	PRTA1QMTA	PR<QM>TA1	PR<QM>TA	PR<QM>TA2TA1
<QM>	QM	QMR	PROM\FU	PRTATA1QM\FU	PRTA1<QM>\FU	PRTA1QMTA	PR<QM>TA1	PR<QM>TA	PR<QM>TA2TA1



PR<QM>TAA1 | PR<QM>TAA | PR<QM>TAA1TA2 | PR<QM>TAATA | PR<QM>TA2TAA1 | PR<QM>TAA2TAA1 | PRTA1QM | PR<QM>TATA | PR<QM>TATA1TA1 | PR<QM>TATATA2

PR<QM>TAA1 PR<QM>TAA PR<QM>TAA1TA2 PR<QM>TAATA PR<QM>TA2TAA1 PR<QM>TAA2TAA1 PRTA1QM PR<QM>TATA PR<QM>TATA1TA1 PR<QM>TATATA2



PRTA1QMTA\FU | PRTA1QMTA\FUITA

PRTA1QMTA\ITA1

PRTA1QMTA\IFV

PRTA1<QM>

<QM>TA

<QM>TA2TA1

PRTA1QMTA\FU PRTA1QMTA\FUITA1

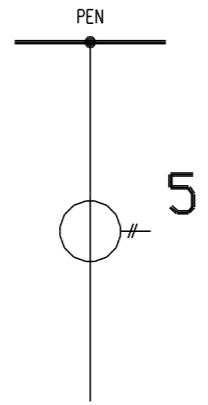
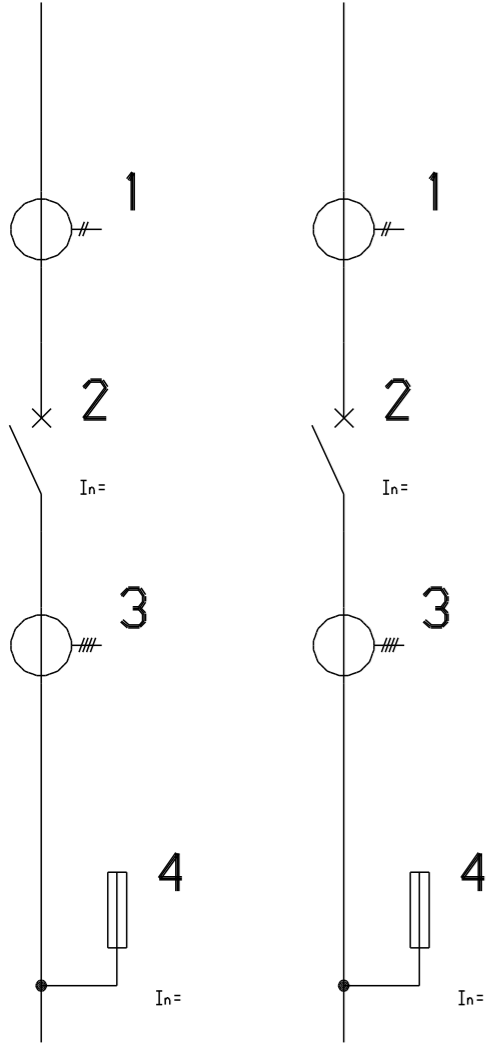
PRTA1QMTA\ITA1

PRTA1QMTA\IFV

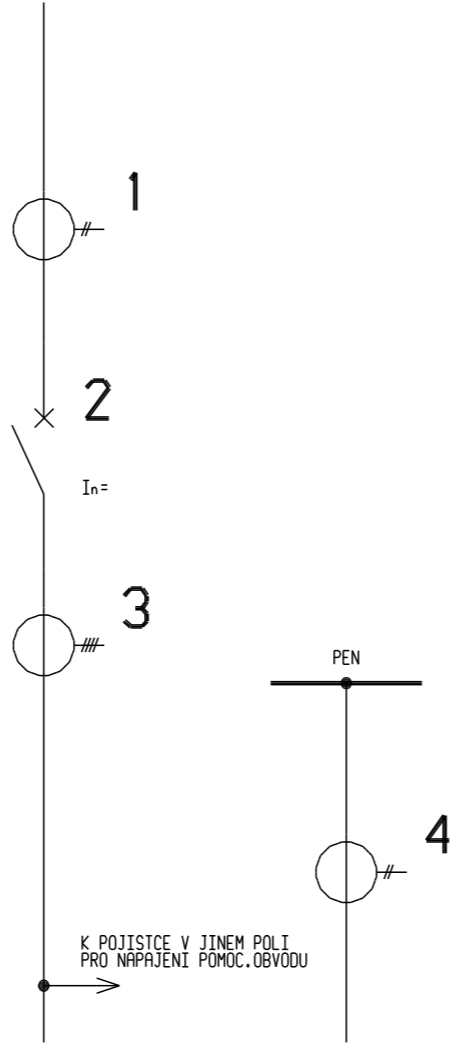
PRTA1<QM>

<QM>TA

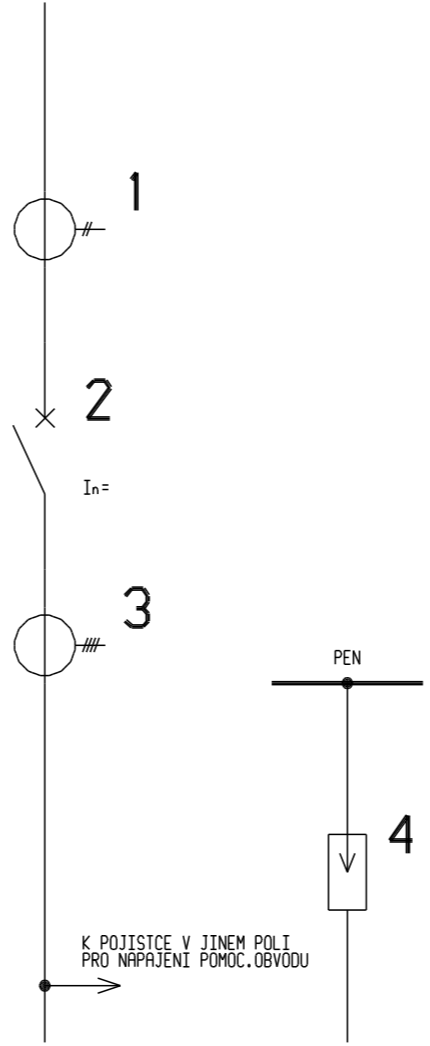
<QM>TA2TA1



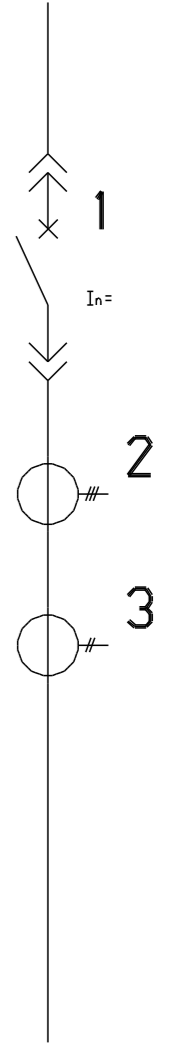
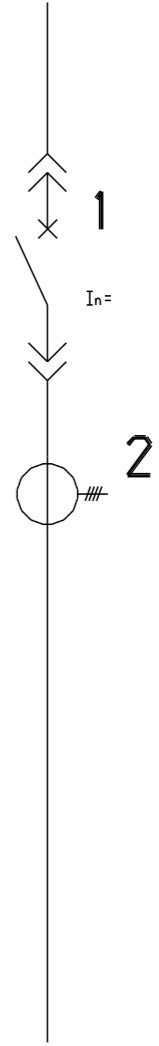
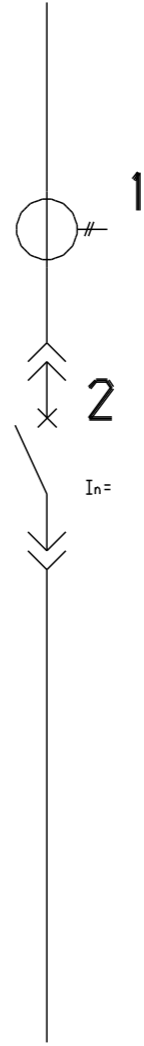
PRTA1QMTA\FUITA1 - 2 MODULY



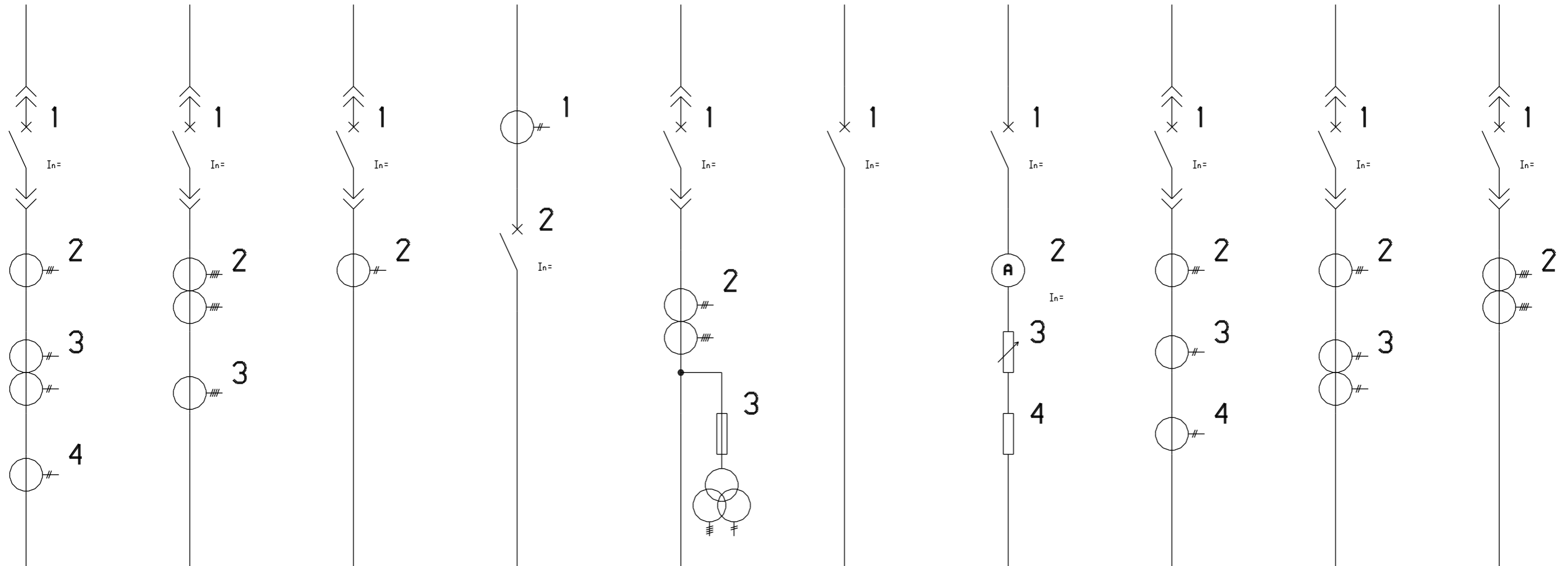
PRTA1QMTA\ITA1 - 2 MODULY



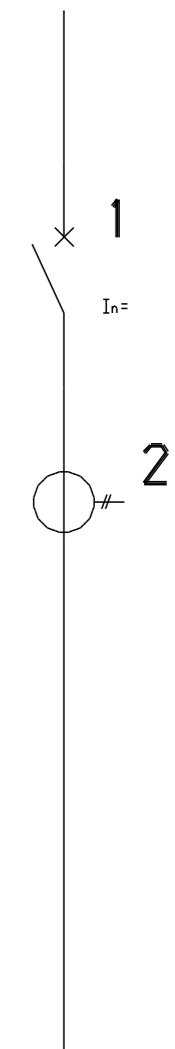
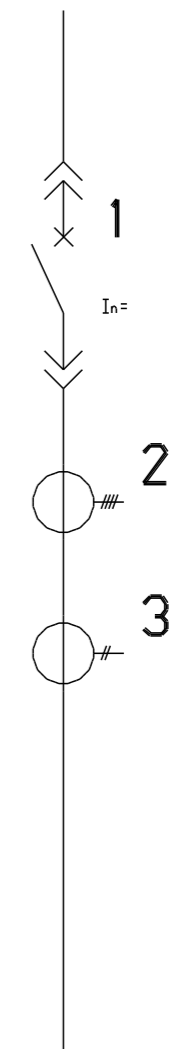
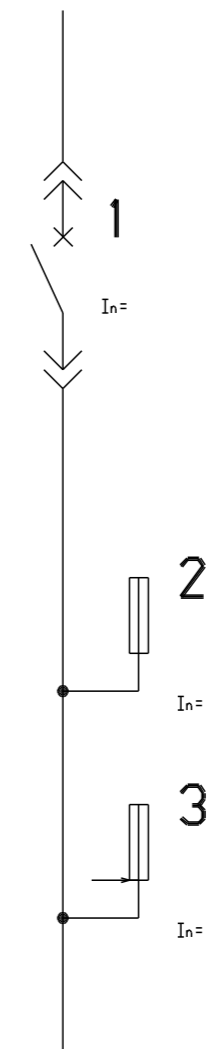
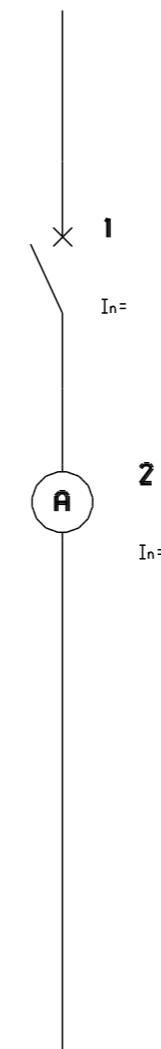
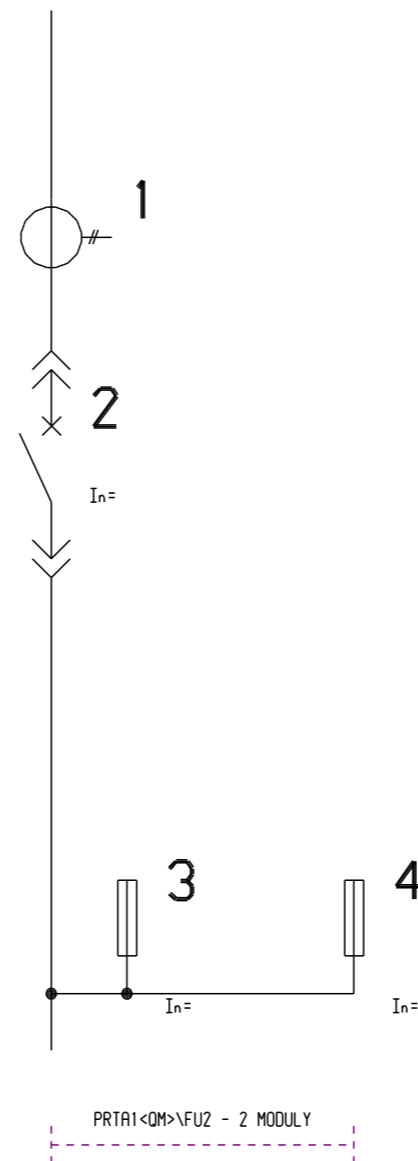
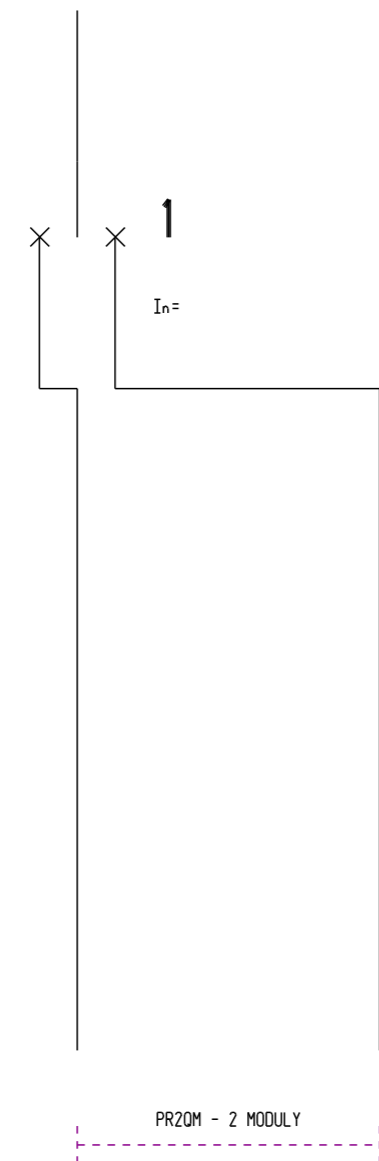
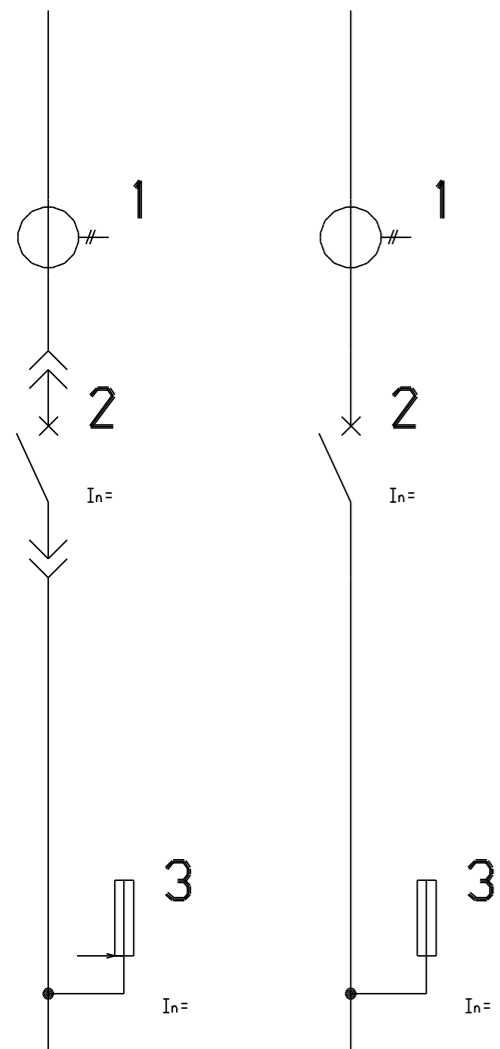
PRTA1QMTA\IFV - 2 MODULY



<QM>TA2TAA1TA1 | <QM>TAATA | <QM>TA1 | TA1QM | PR<QM>TAA\TVV | PRQM | QMPARPR | <QM>TA2TA1TA1 | <QM>TA2TAA1 | <QM>TAA  
 <QM>TA2TAA1TA1 | <QM>TAATA | <QM>TA1 | TA1QM | PR<QM>TAA\TVV | PROM | QMPARPR | <QM>TA2TA1TA1<QM>TA2TAA1 | <QM>TAA



PRTA1<QM>\FUS | PRTA1QM\FU | PR2QM | PRTA1<QM>\FU2 | QMPA | PR<QM>\FU\FUS | <QM>TATA1 | PRQMTA1  
**PRTA1<QM>\FUS** | **PRTA1QM\FU** | **PR2QM** | **PRTA1<QM>\FU2** | **QMPA** | **PR<QM>\FU\FUS** | **<QM>TATA1** | **PRQMTA1**



<QM>RA\FUS | PRQM\FU2\FU  
**<QM>RA\FUS** | **PROM\FU2\FU**

QMRA  
**QMRA**

<QM>RA  
**<QM>RA**

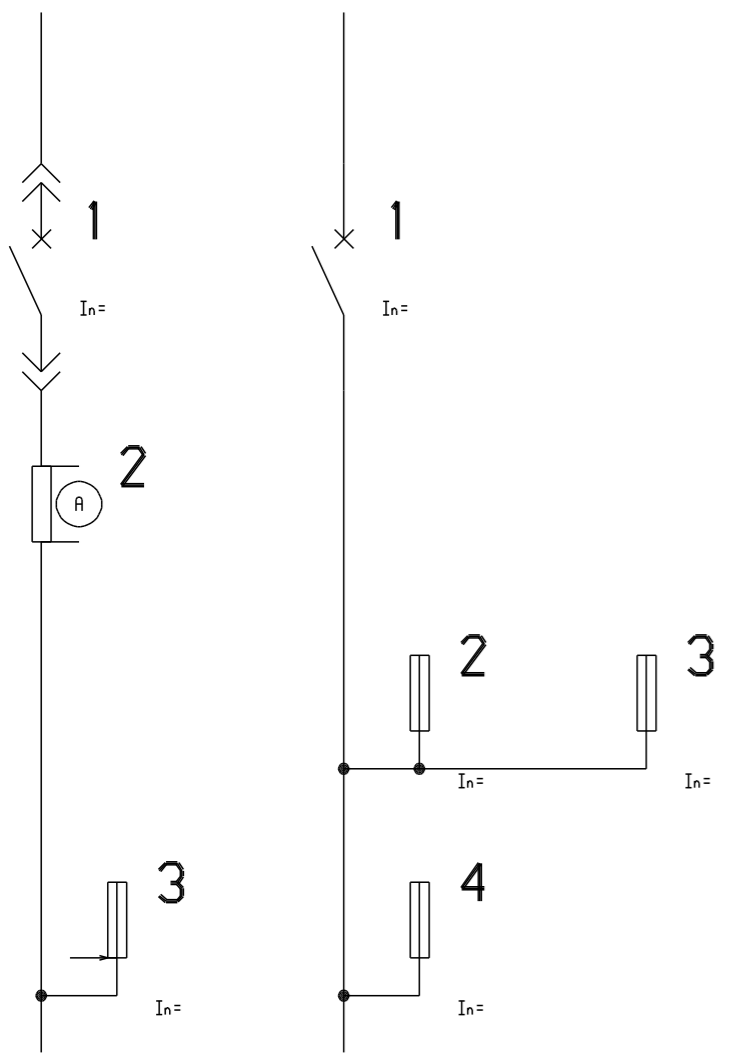
PR<QM>\FUS  
**PR<QM>\FUS**

TA1<QM>  
**TA1<QM>**

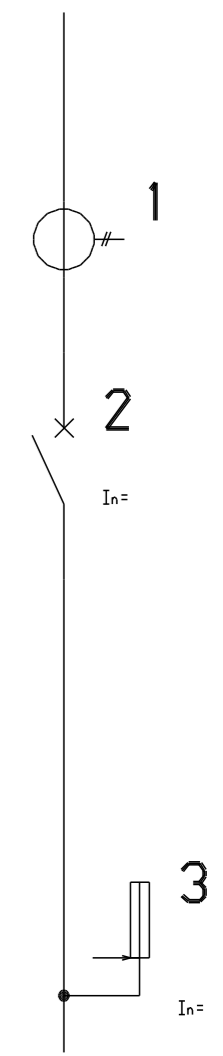
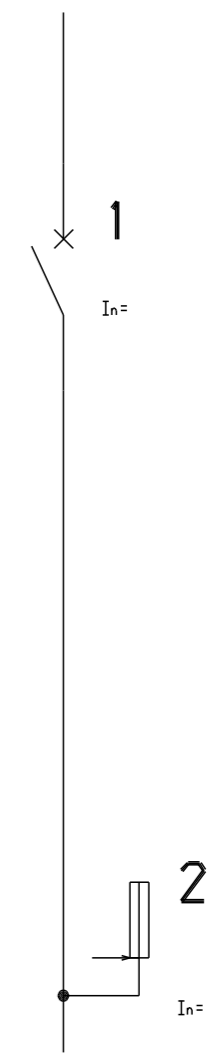
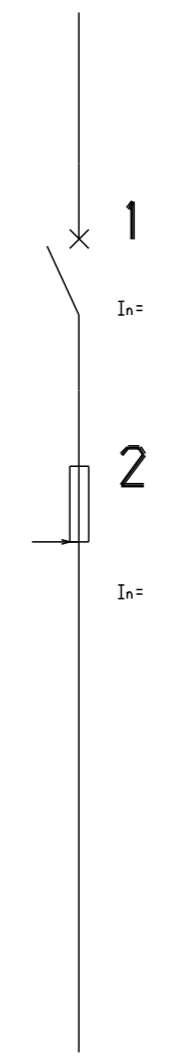
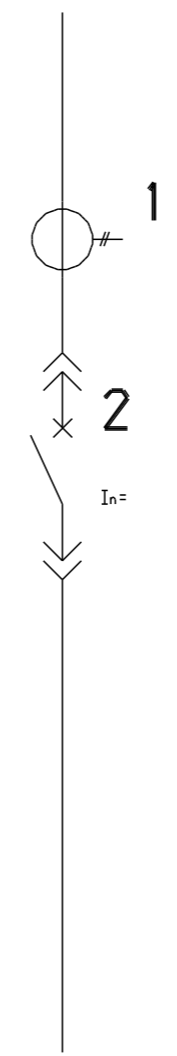
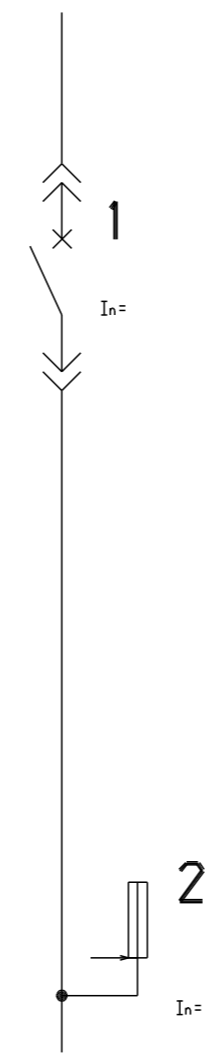
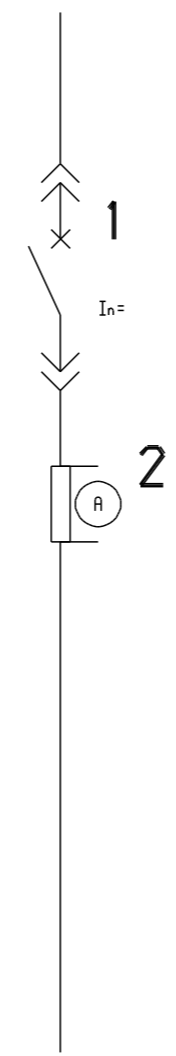
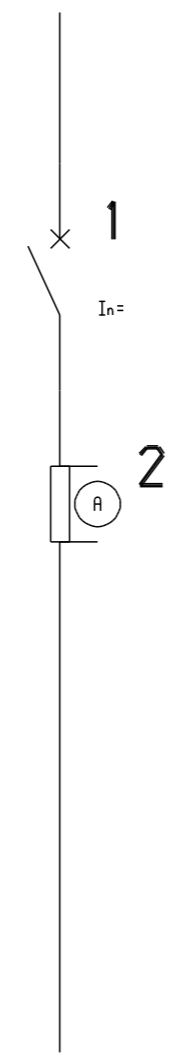
QMFUS  
**QMFUS**

PRQM\FUS  
**PROM\FUS**

PRTA1QM\FUS  
**PRTA1QM\FUS**



PROM\FU2\FU - 2 MODULY



<QM>TA2TAA2TA2 | <QM>TAA1TA2TA1 | <QM>TAA2TAA1TA1

PRQMA

PRQMB

PR<QM>RARA

PR<QM>

<QM>TAA1TA1

<QM>TAATA1

<QM>TAATA2

<QM>TA2TAA2TA2

<QM>TAA1TA2TA1

<QM>TAA2TAA1TA1

PRQMA

PRQMB

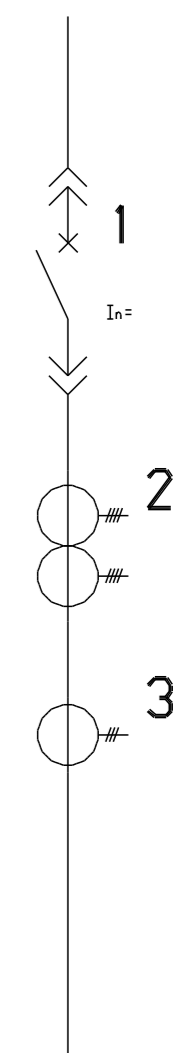
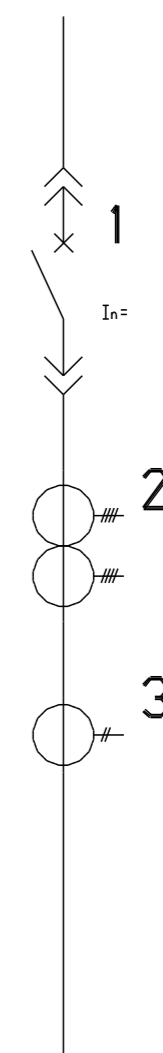
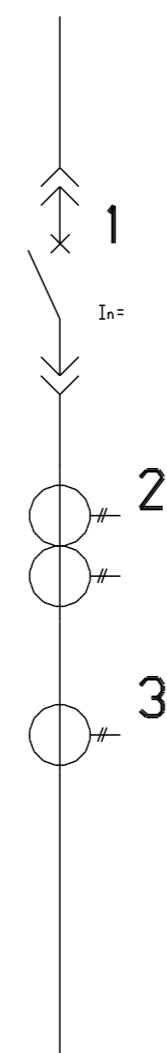
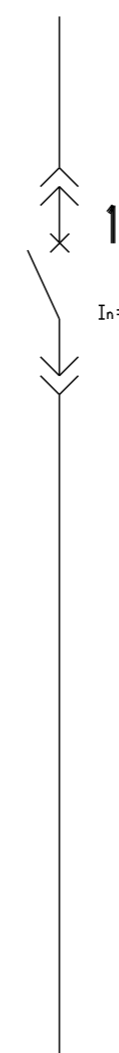
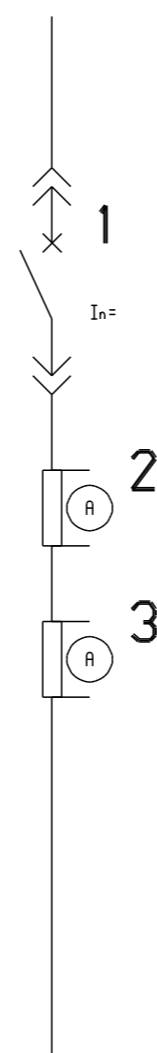
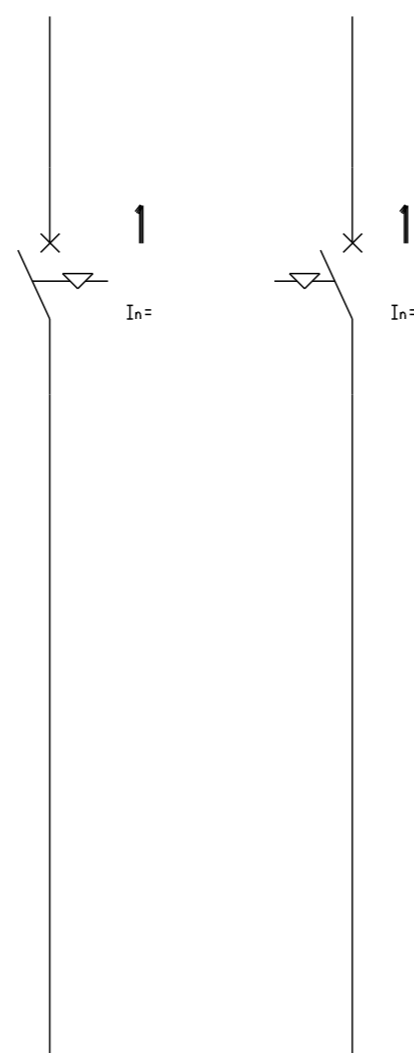
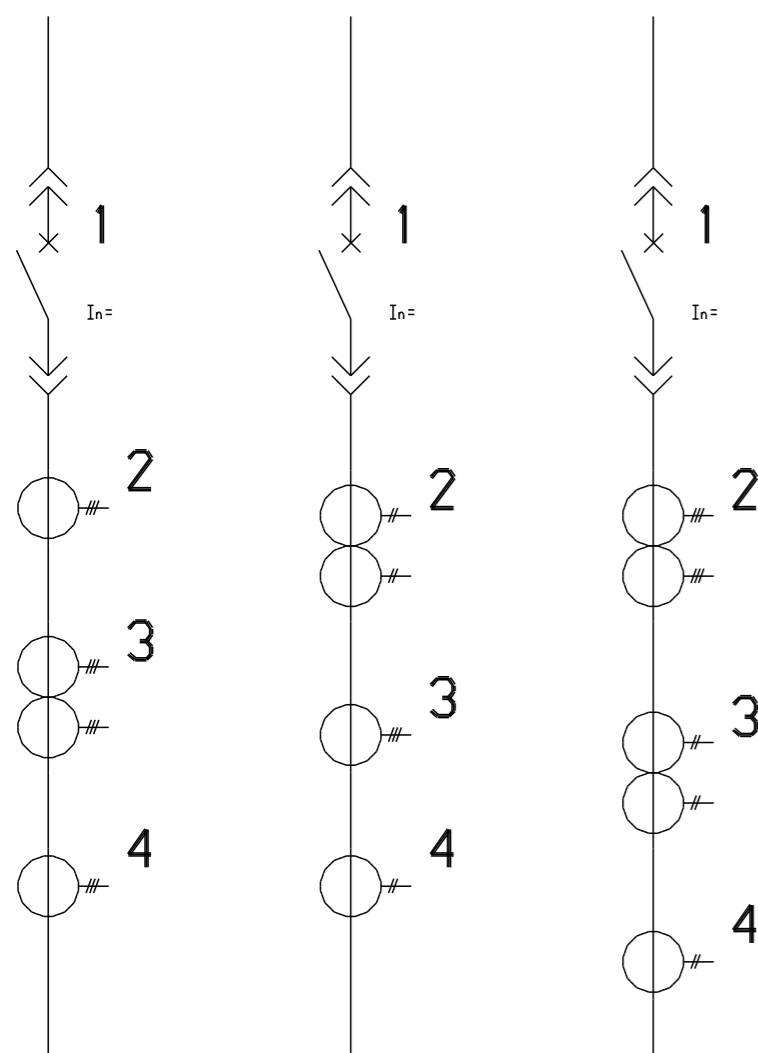
PR<QM>RARA

PR<QM>

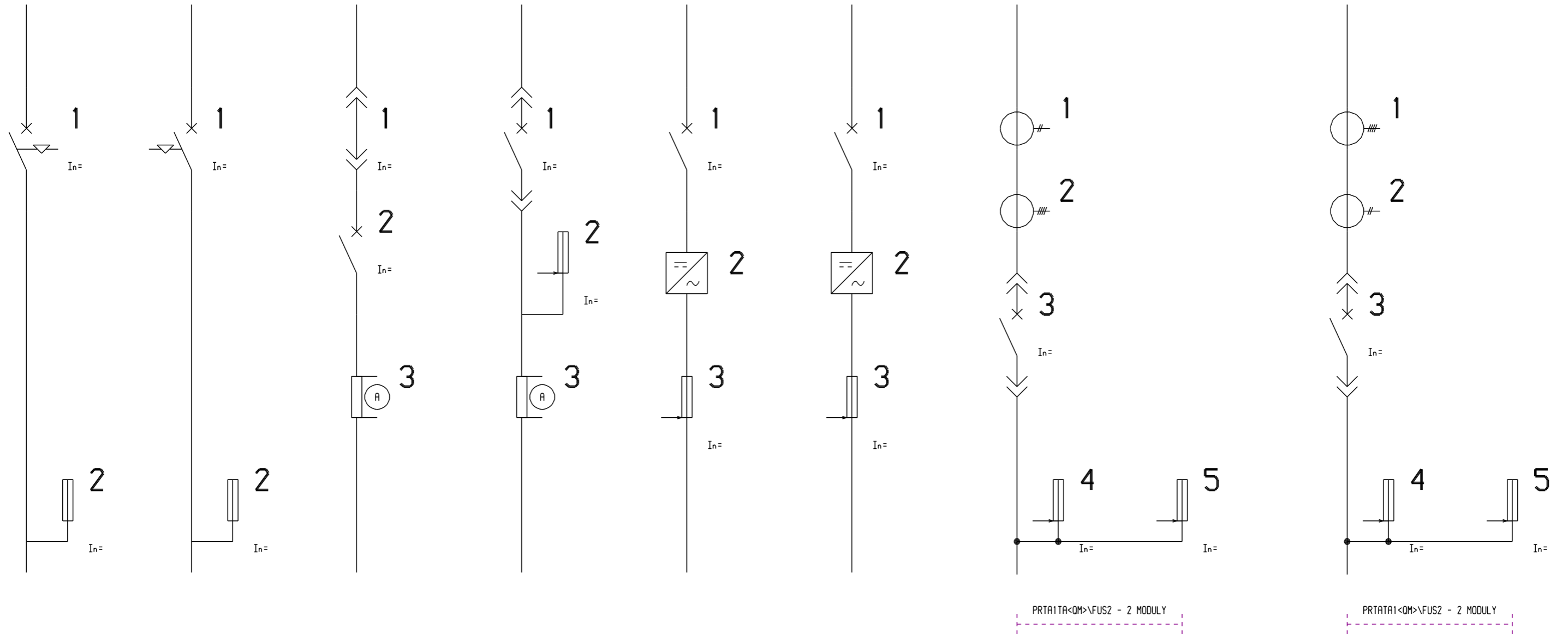
<QM>TAA1TA1

<QM>TAATA1

<QM>TAATA2



PRQMA\FU | PRQMB\FU | <ZP>QMRA | <QM>\FUSRA | QMGUFUS | PRQMGUFUS | PRTA1TA<QM>\FUS | PRTATA1<QM>\FUS  
**PRQMA\FU** | **PRQMB\FU** | **<ZP>QMRA** | **<QM>\FUSRA** | **QMGUFUS** | **PRQMGUFUS** | **PRTA1TA<QM>\FUS2** | **PRTATA1<QM>\FUS2**

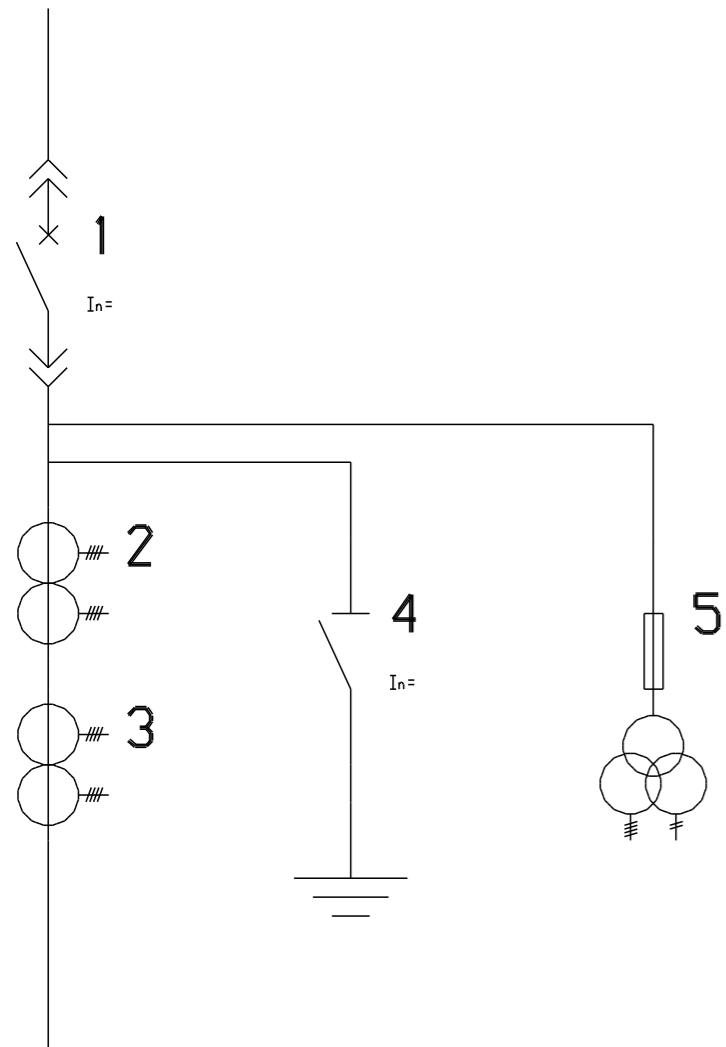


**PRILOHA 2.1. TYPY ODBOCEK**  
**ODBOCKY ZACINAJICI VYPINACEM-8**



PR<QM>\TVV\QTAA

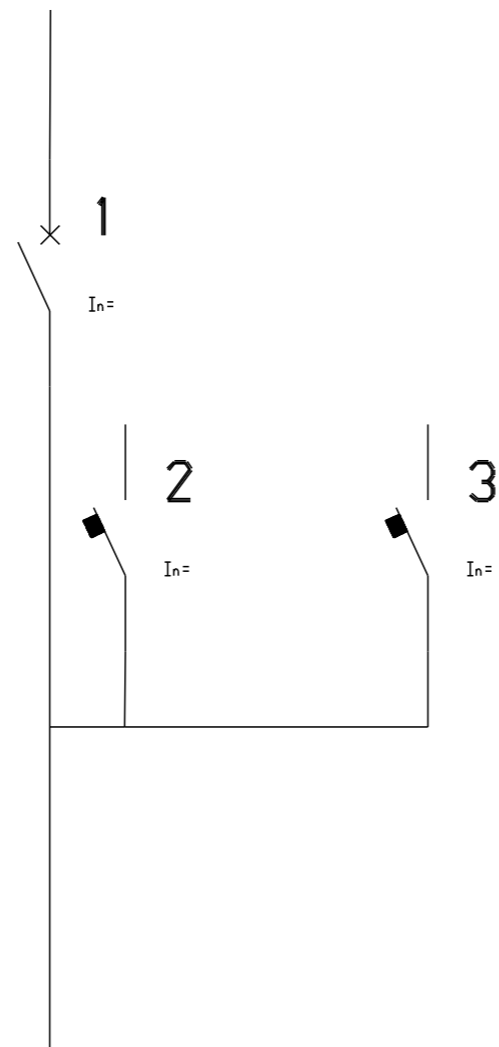
### PR<QM>\TVV\QTAA



PR<QM>\TVV\QTAA - 2 MODULY

PRQM\FA\FA

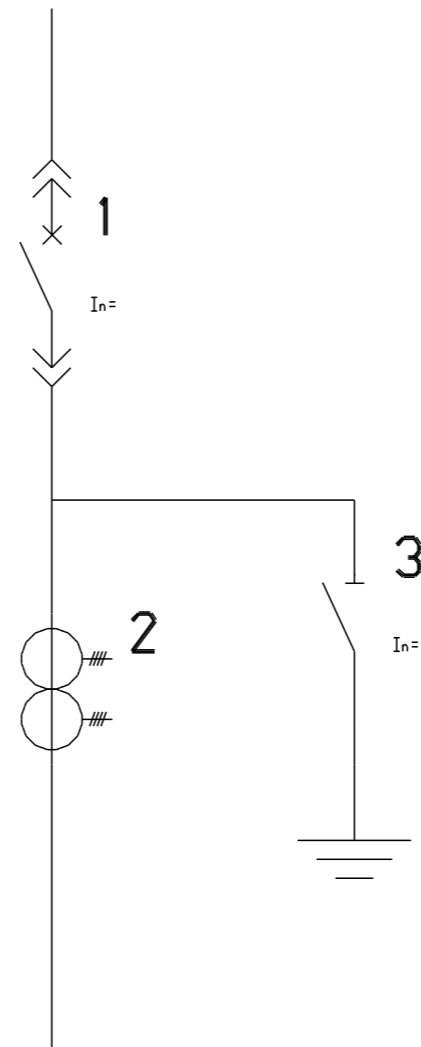
### PRQM\FA\FA



PRQM\FA\FA - 2 MODULY

<QM>\Q\TAA

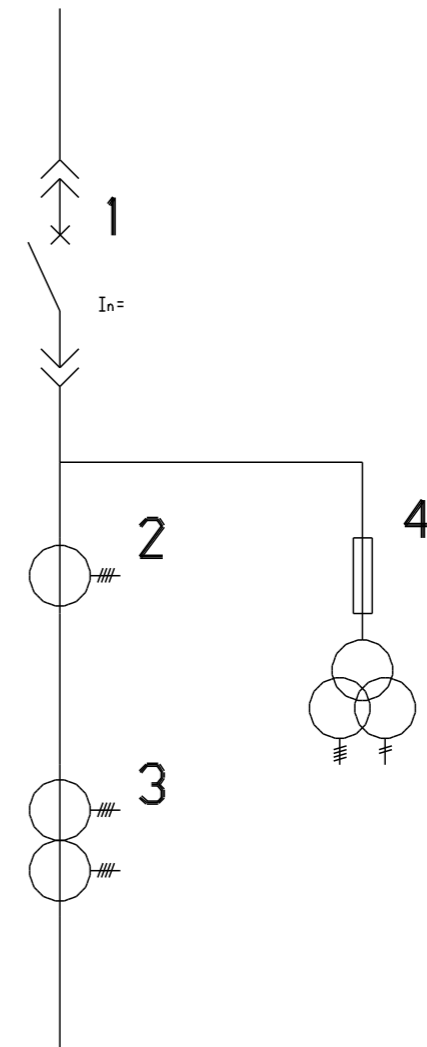
### <QM>\Q\TAA



<QM>\Q\TAA - 2 MODULY

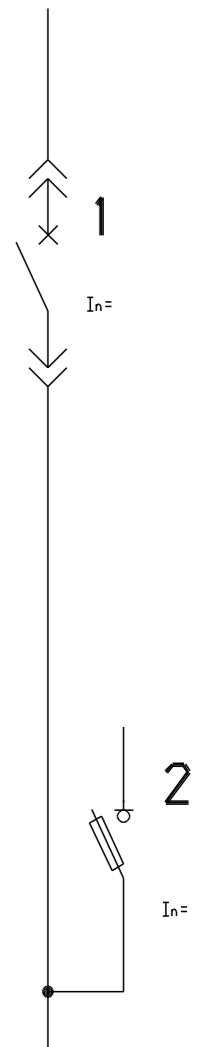
PR<QM>\TVVTATAA

### PR<QM>\TVVTATAA



PR<QM>\QSF

### PR<QM>\QSF



PR<QM>GUFUS

PRTAQMQSF

PR<QM>D2FU2

PRQMD2FU2

PRQMGU2FU2

QMGU2FU2

PR<QM>GUFUS

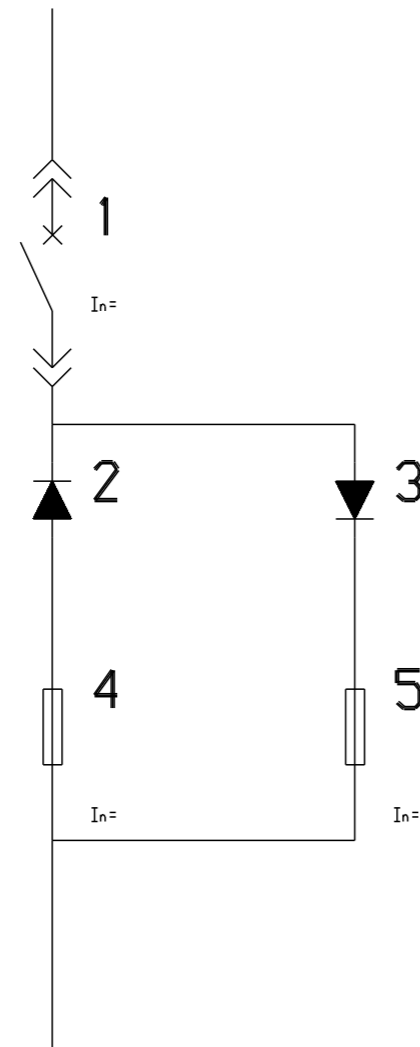
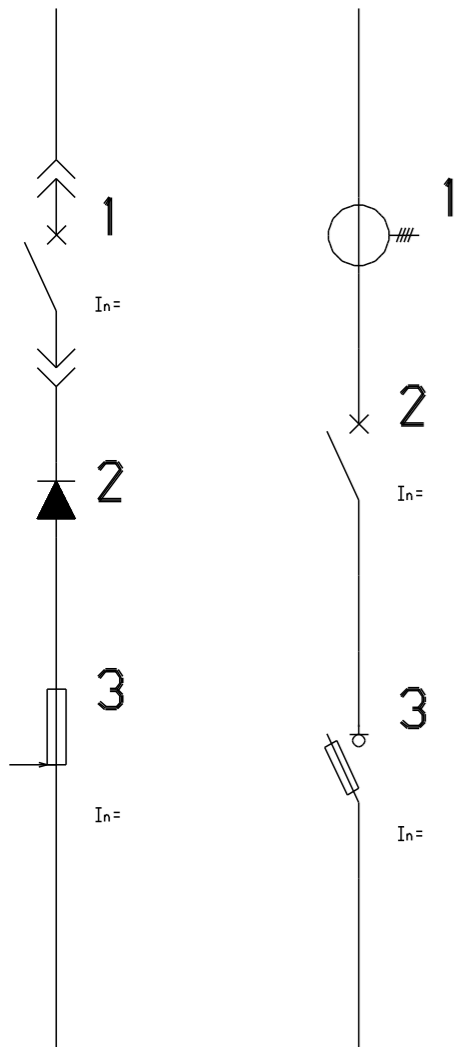
PRTAQMQSF

PR<QM>D2FU2

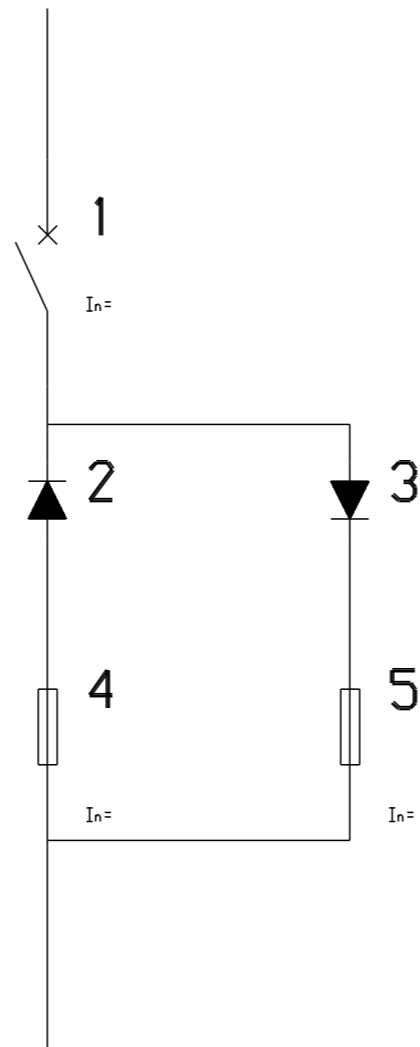
PRQMD2FU2

PRQMGU2FU2

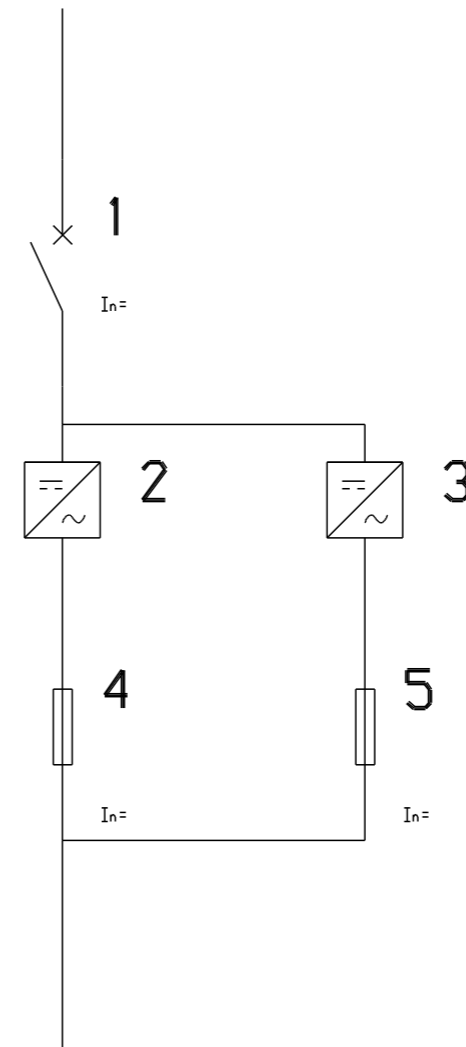
QMGU2FU2



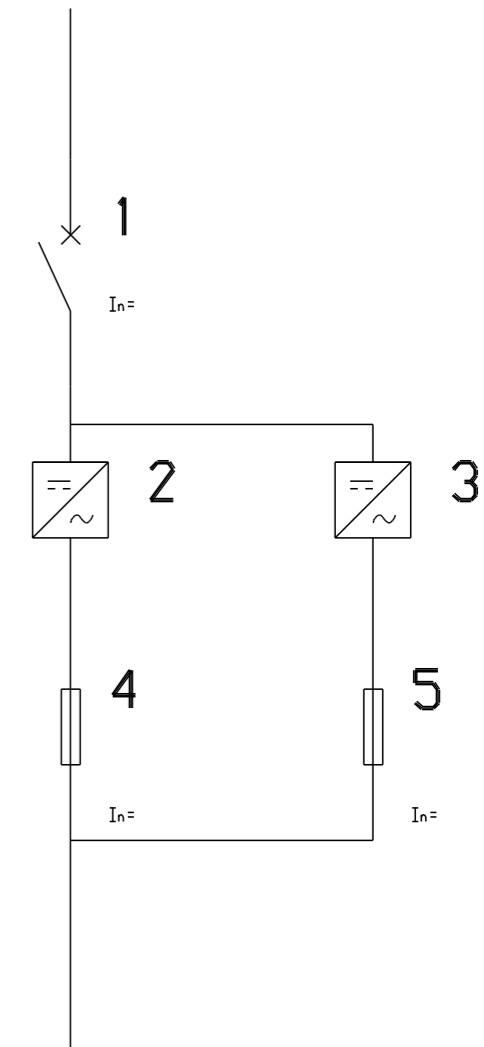
PR<QM>D2FU2 - 2 MODULY



PRQMD2FU2 - 2 MODULY



QMGU2FU2 - 2 MODULY



QMGU2FU2 - 2 MODULY

PRQM2QM

**PROM2QM**

<QM>FU

**<QM>FU**

<QM>FUS

**<QM>FUS**

PRTAQM

**PRTAQM**

PR<QM>RARA1

**PR<QM>RARA1**

<QM>R

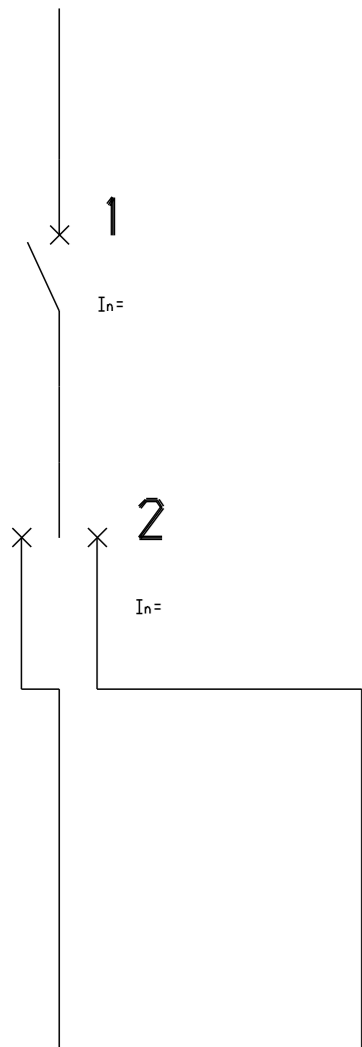
**<QM>R**

<QM>SK

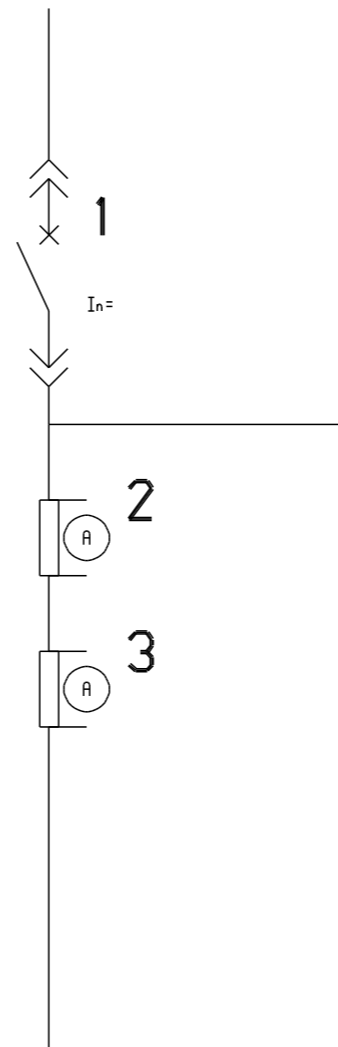
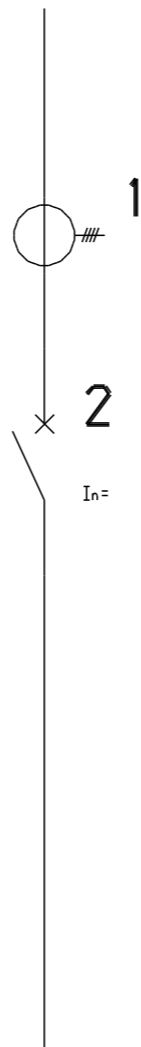
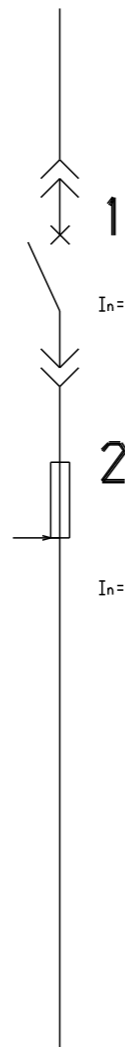
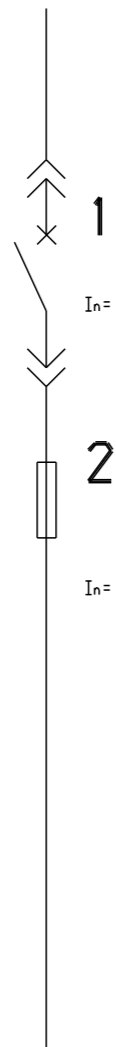
**<QM>SK**

QMNEZAP

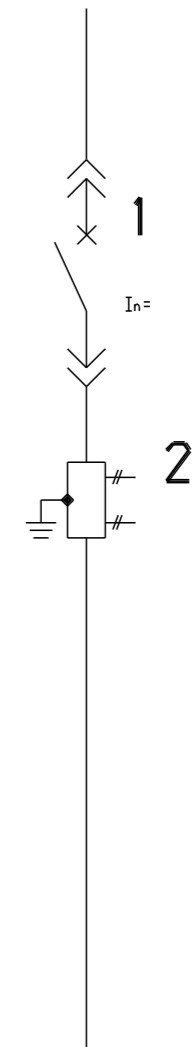
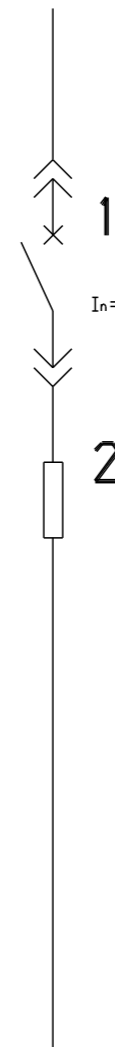
**QMNEZAP**



PROM2QM - 2 MODULY



PR<QM>RARA1 - 2 MODULY



QM<sub>QF</sub>

PR<QM>TAATA1

QM<sub>FU</sub>

PRQM<sub>FU</sub>\

PRQM\KNEPRIP

PR<QM>RA

PR<QM>RAR

PRQM<sub>QFKA</sub>

**QM<sub>QF</sub>**

**PR<QM>TAATA1**

**QM<sub>FU</sub>**

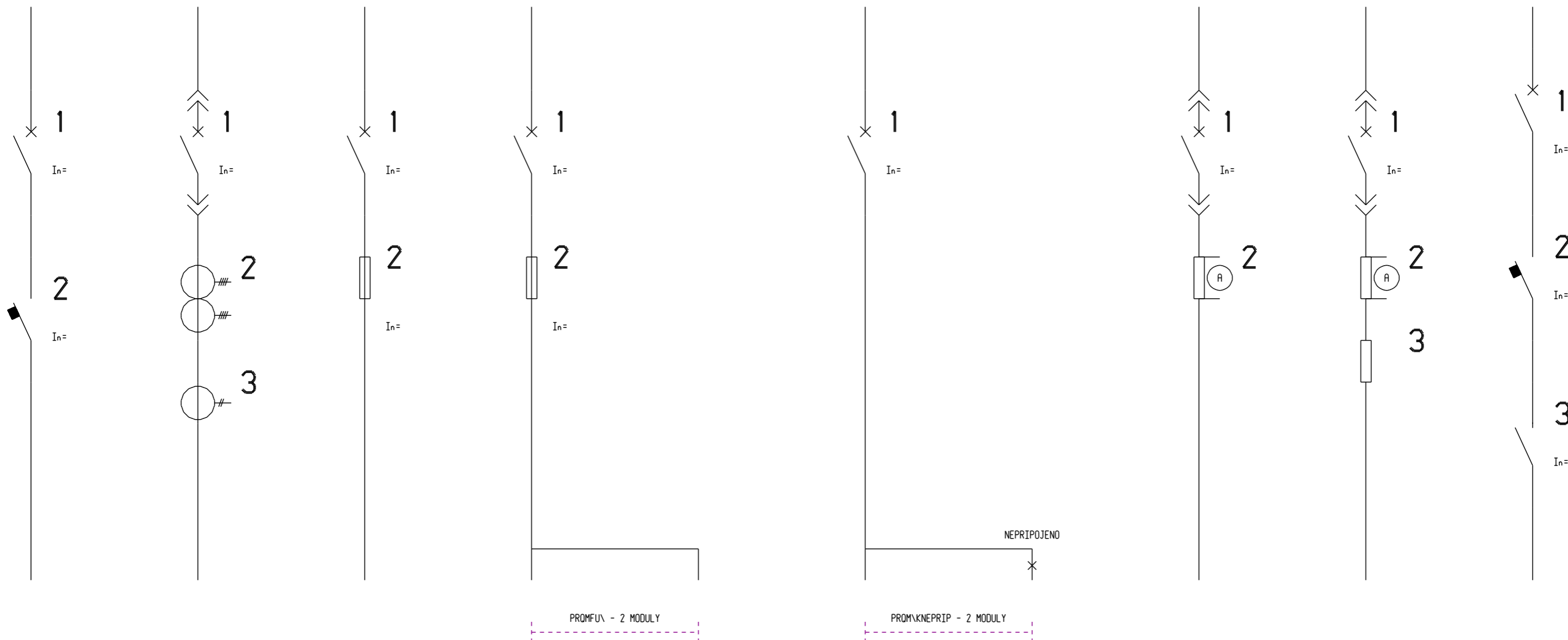
**PRQM<sub>FU</sub>\**

**PRQM\KNEPRIP**

**PR<QM>RA**

**PR<QM>RAR**

**PRQM<sub>QFKA</sub>**



QMFUKMFA\FUQMFA

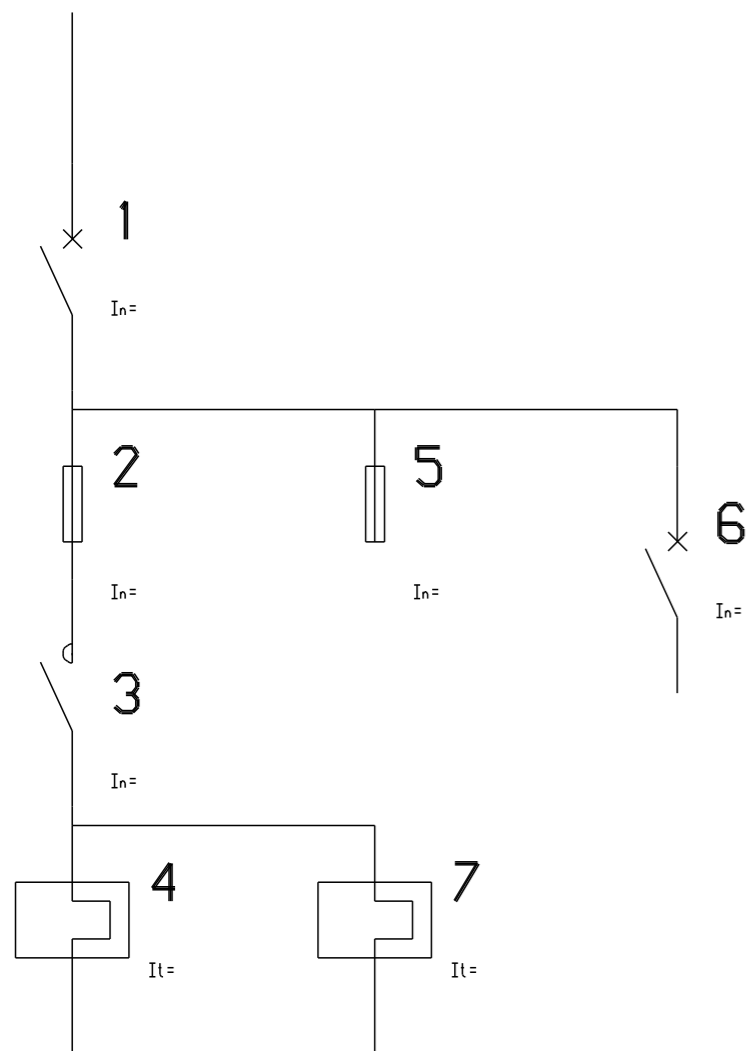
PRQMKMFU\FU\FV\

QMFUKMFA\FUFQ\Q

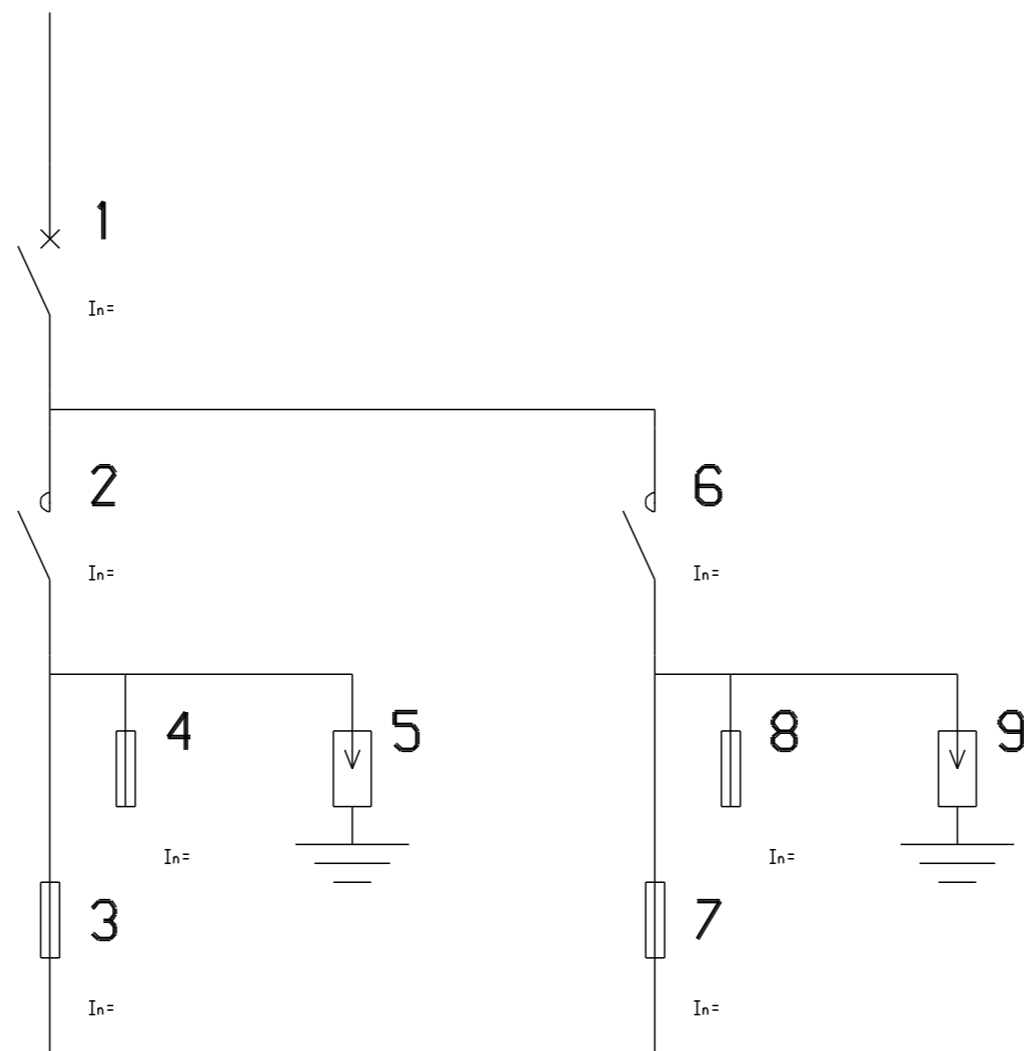
### QMFUKMFA\FUQMFA

### PRQMKMFU\FU\FV\KMFU\FU\FV

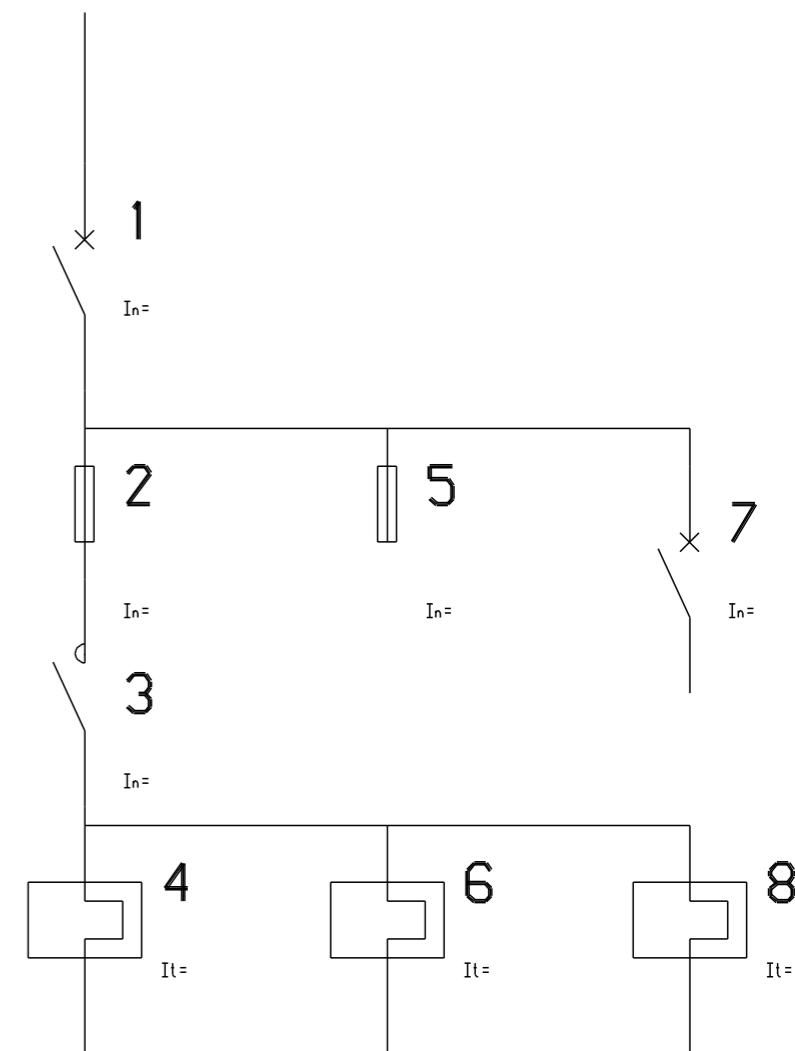
### QMFUKMFA\FUFQ\QMFA



QMFUKMFA\FUQMFA - 3 MODULY



PRQMKMFU\FU\FV\KMFU\FU\FV - 4 MODULY



QMFUKMFA\FUFQ\QMFA - 3 MODULY

PRQM $\backslash$ KMFU $\backslash$ FU2

PR $\langle$ QM $\rangle$  $\backslash$ FUQF

PR $\langle$ QM $\rangle$ TAA $\backslash$ Q $\backslash$ FV

$\langle$ QM $\rangle$ TAA $\backslash$ Q $\backslash$ FV

QM $\backslash$ QMKA

PRQM $\backslash$ FU

**PRQM $\backslash$ KMFU $\backslash$ FU2**

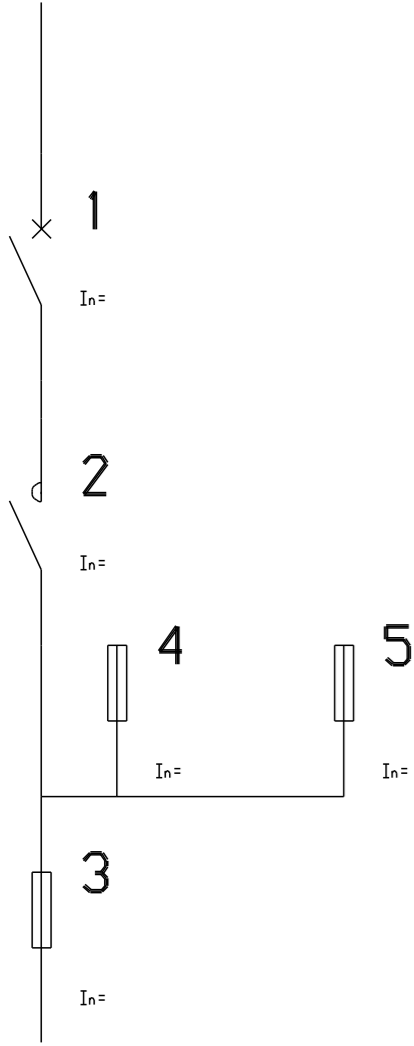
**PR $\langle$ QM $\rangle$  $\backslash$ FUQF**

**PR $\langle$ QM $\rangle$ TAA $\backslash$ Q $\backslash$ FV**

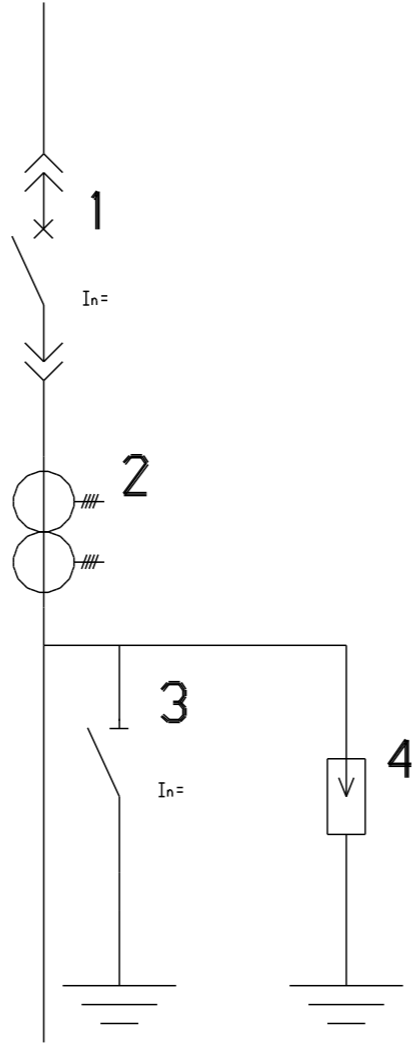
**$\langle$ QM $\rangle$ TAA $\backslash$ Q $\backslash$ FV**

**QM $\backslash$ QMKA**

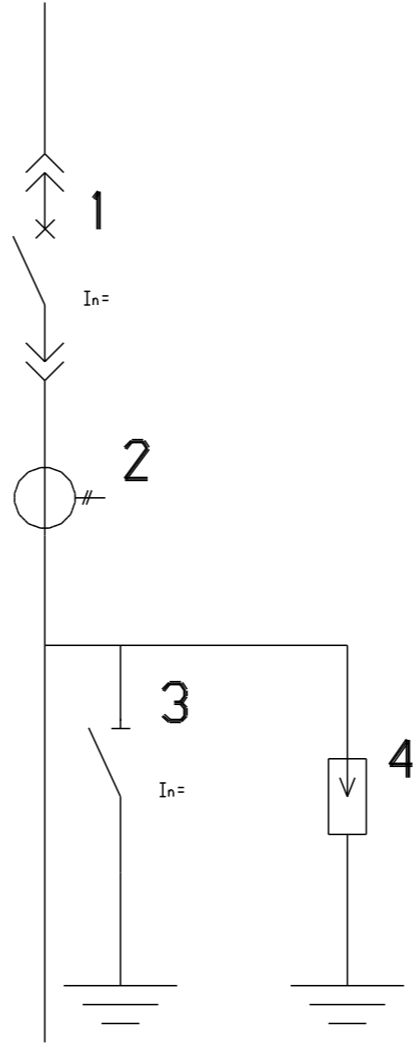
**PRQM $\backslash$ FU**



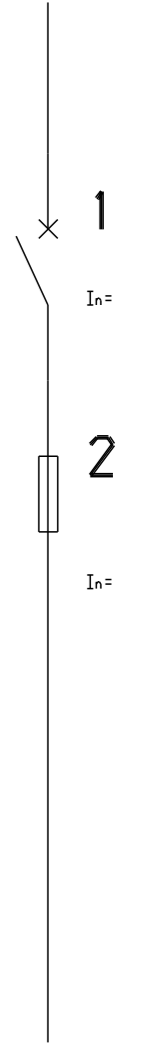
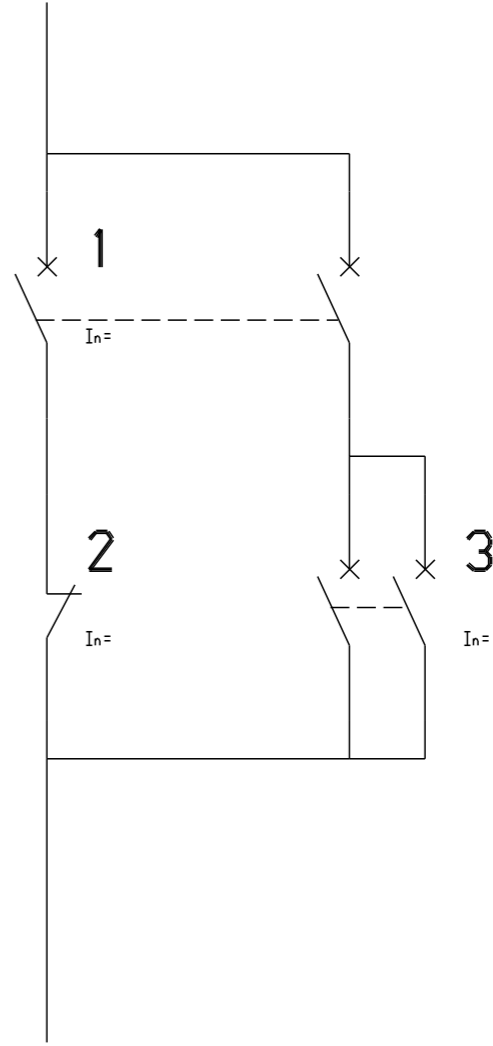
PRQM $\backslash$ KMFU $\backslash$ FU2 - 2 MODULY



PRQM $\backslash$ KMFU $\backslash$ FU2 - 2 MODULY

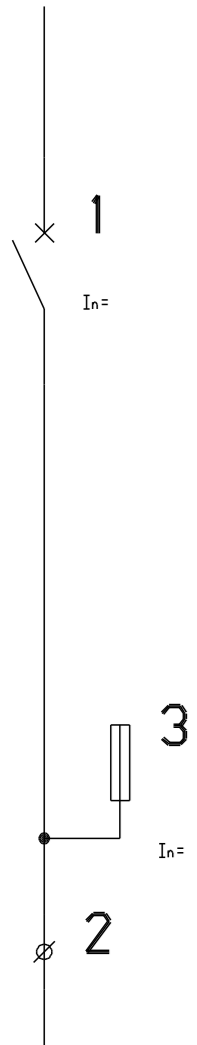


$\langle$ QM $\rangle$ TAA $\backslash$ Q $\backslash$ FV - 2 MODULY



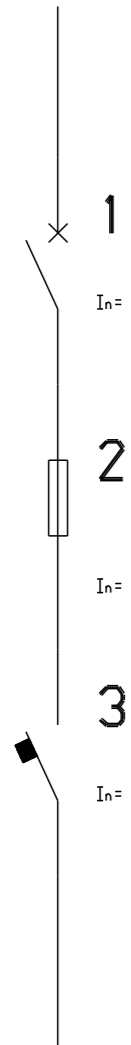
PRQMX\FU

**PRQMX\FU**



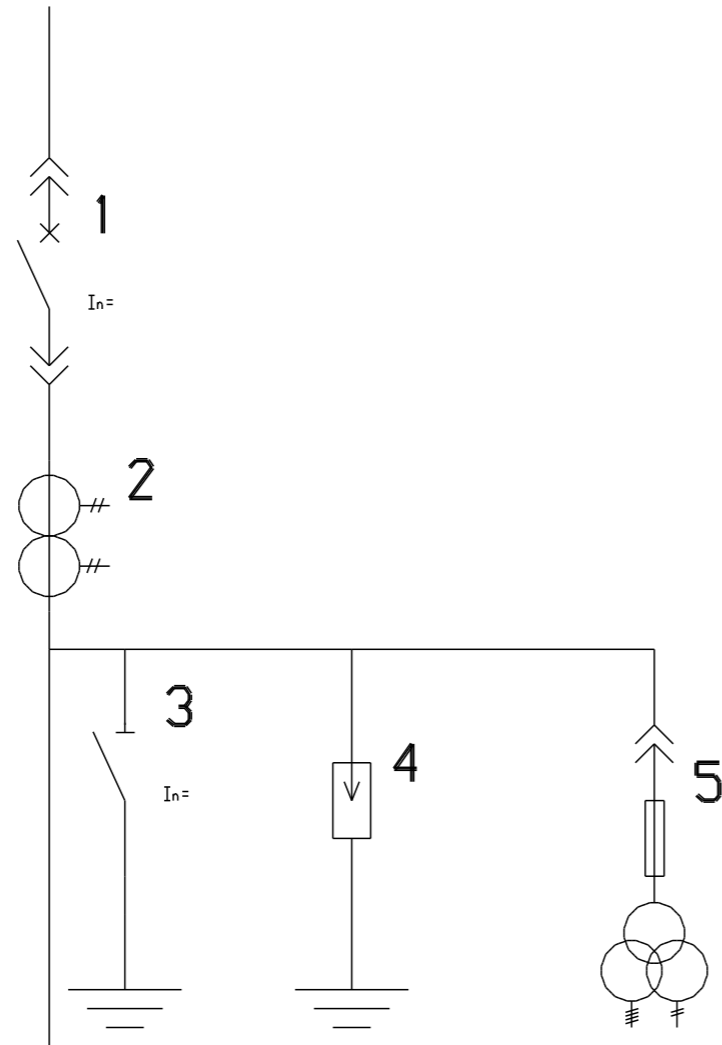
QMFUQF

**QMFUQF**



|<QM>TAA\Q\FV\<T

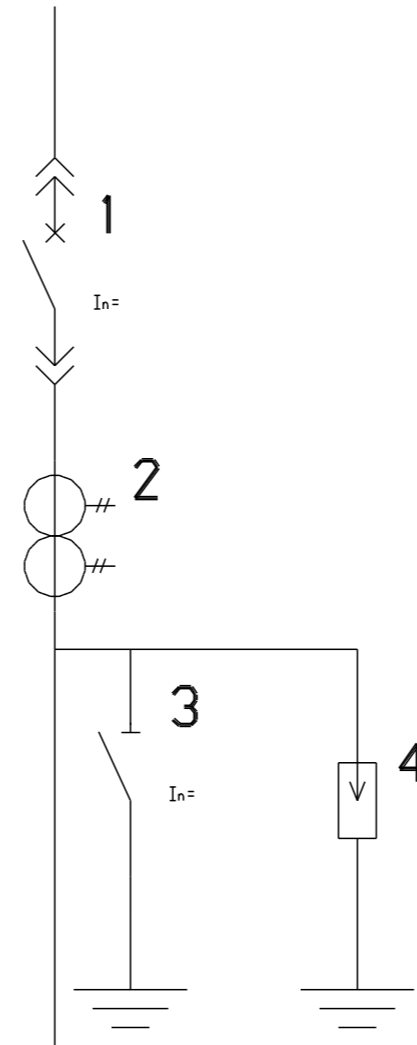
**<QM>TAA\Q\FV\<TVV**



<QM>TAA\Q\FV\<TVV - 3 MODULY

|<QM>TAA\Q\FV

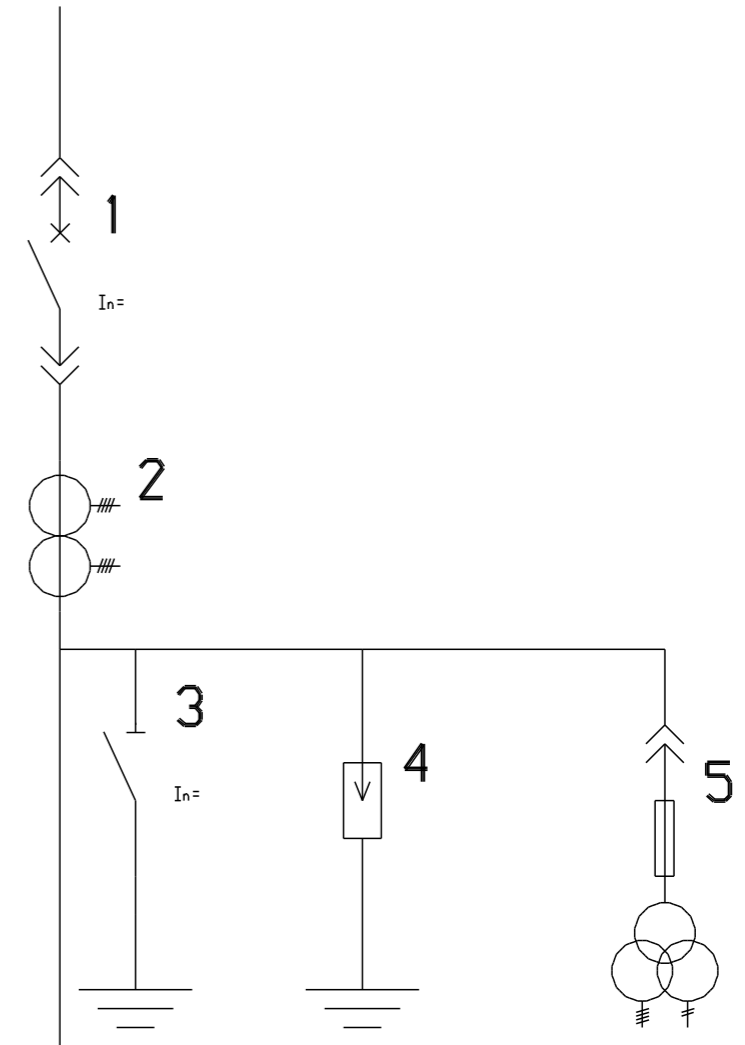
**<QM>TAA\Q\FV**



<QM>TAA\Q\FV - 2 MODULY

|PR<QM>TAA\Q\FV\

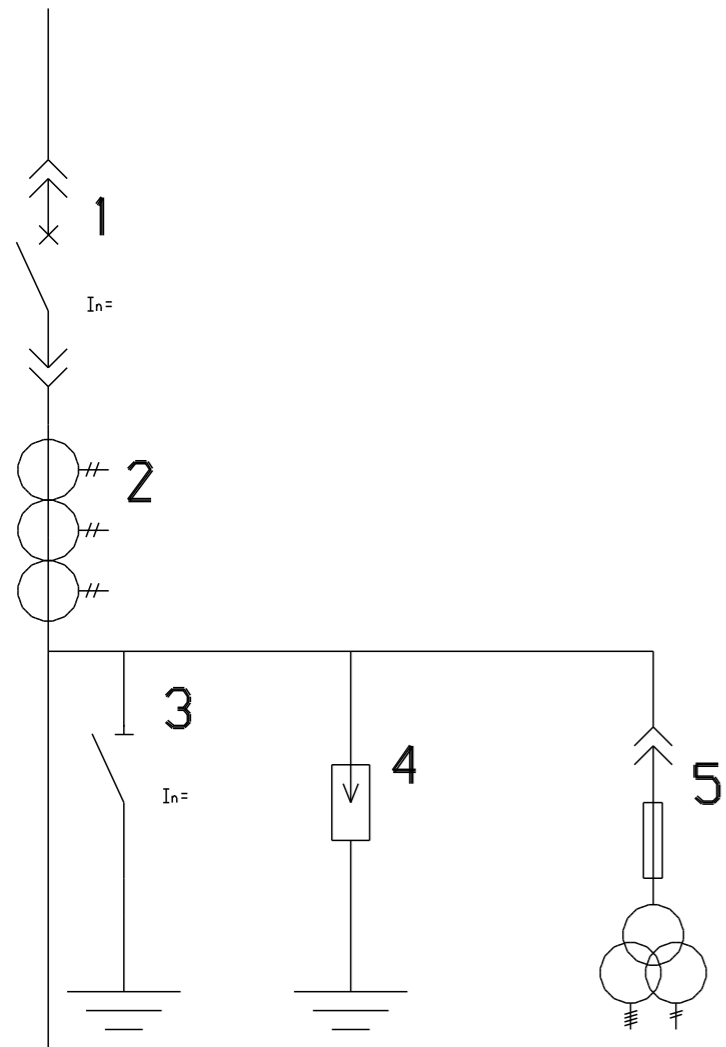
**PR<QM>TAA\Q\FV\<TVV**



PR<QM>TAA\Q\FV\<TVV - 3 MODULY

PR<QM>TAAA\Q\FV

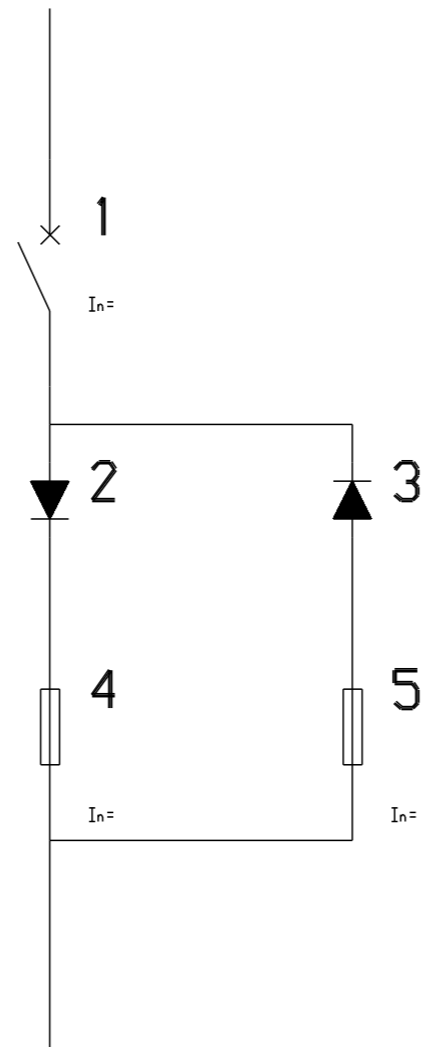
### PR<QM>TAAA\Q\FV\<TVV



PR<QM>TAAA\Q\FV\<TVV - 3 MODULY

QMD2FU2

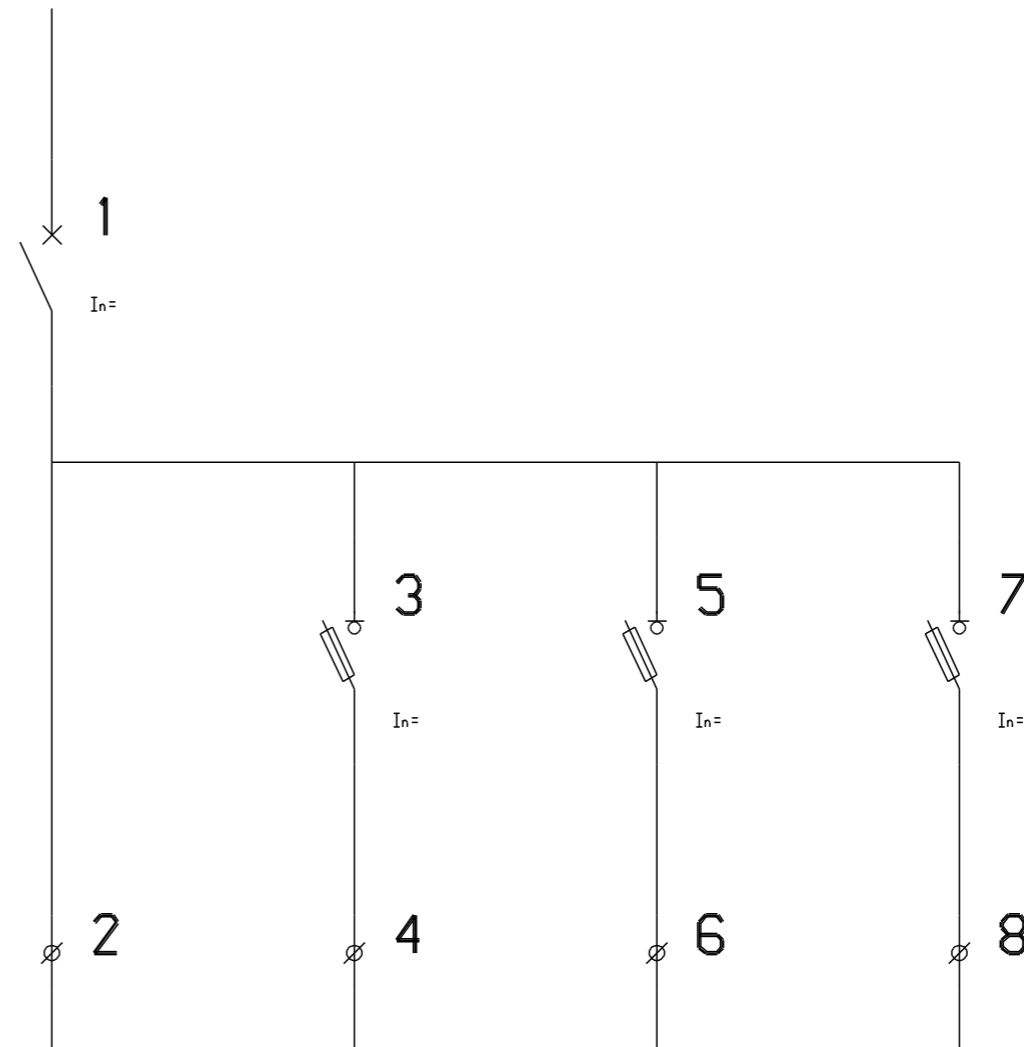
### QMD2FU2



QMD2FU2 - 2 MODULY

PRQM\QSF\QSF\QSF

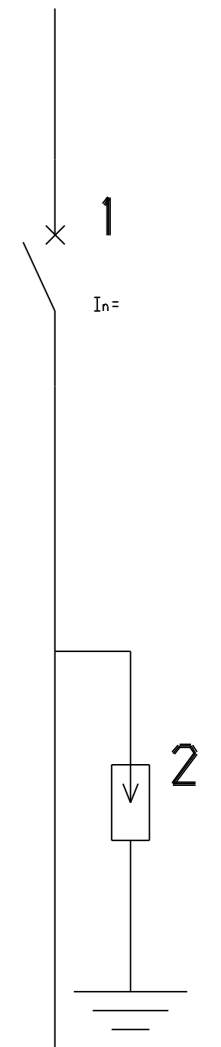
### PRQM\QSF\QSF\QSF



PRQM\QSF\QSF\QSF - 4 MODULY

PRQM\FV

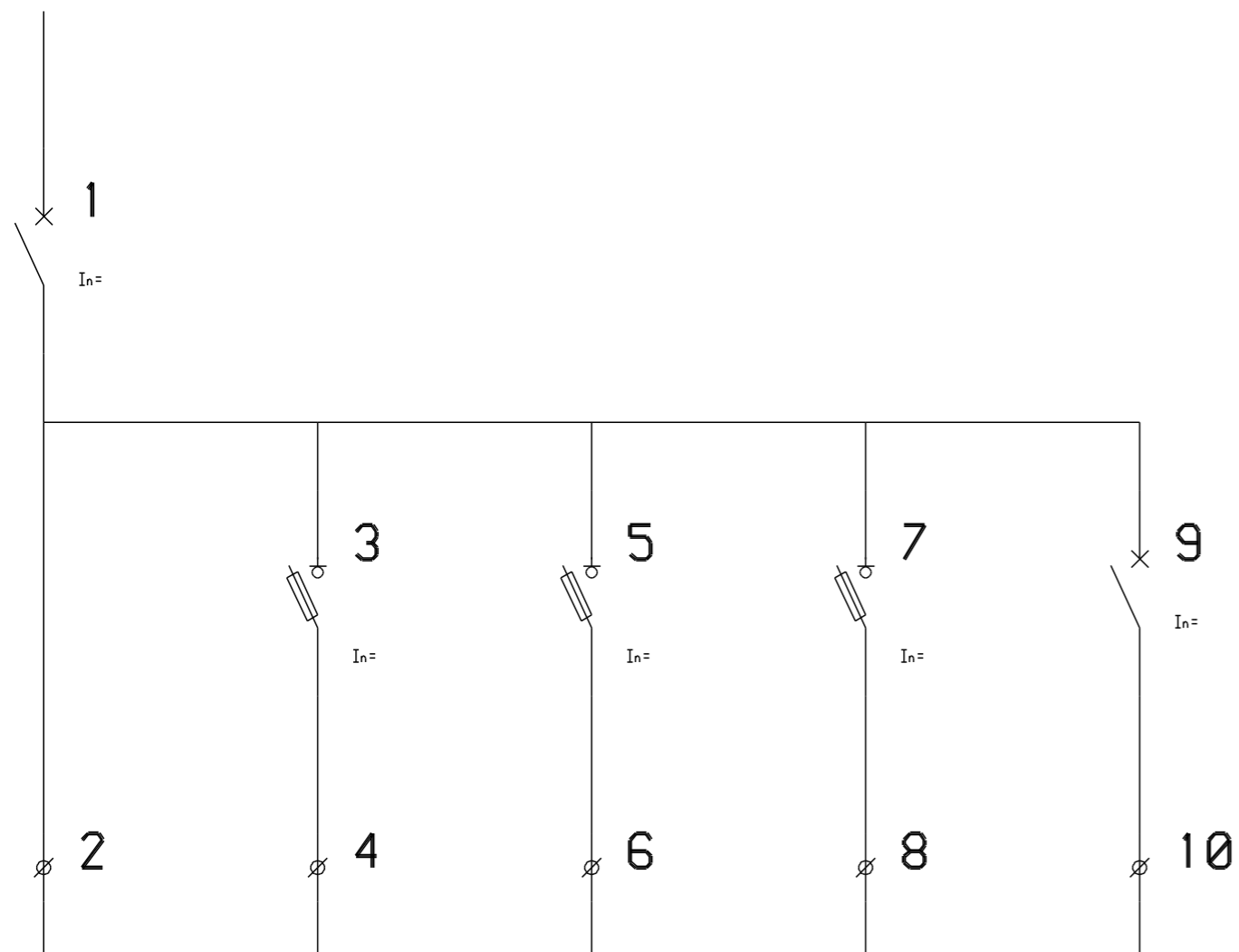
### PRQM\FV





X\QSFX\QSFX\QSFX\QFX

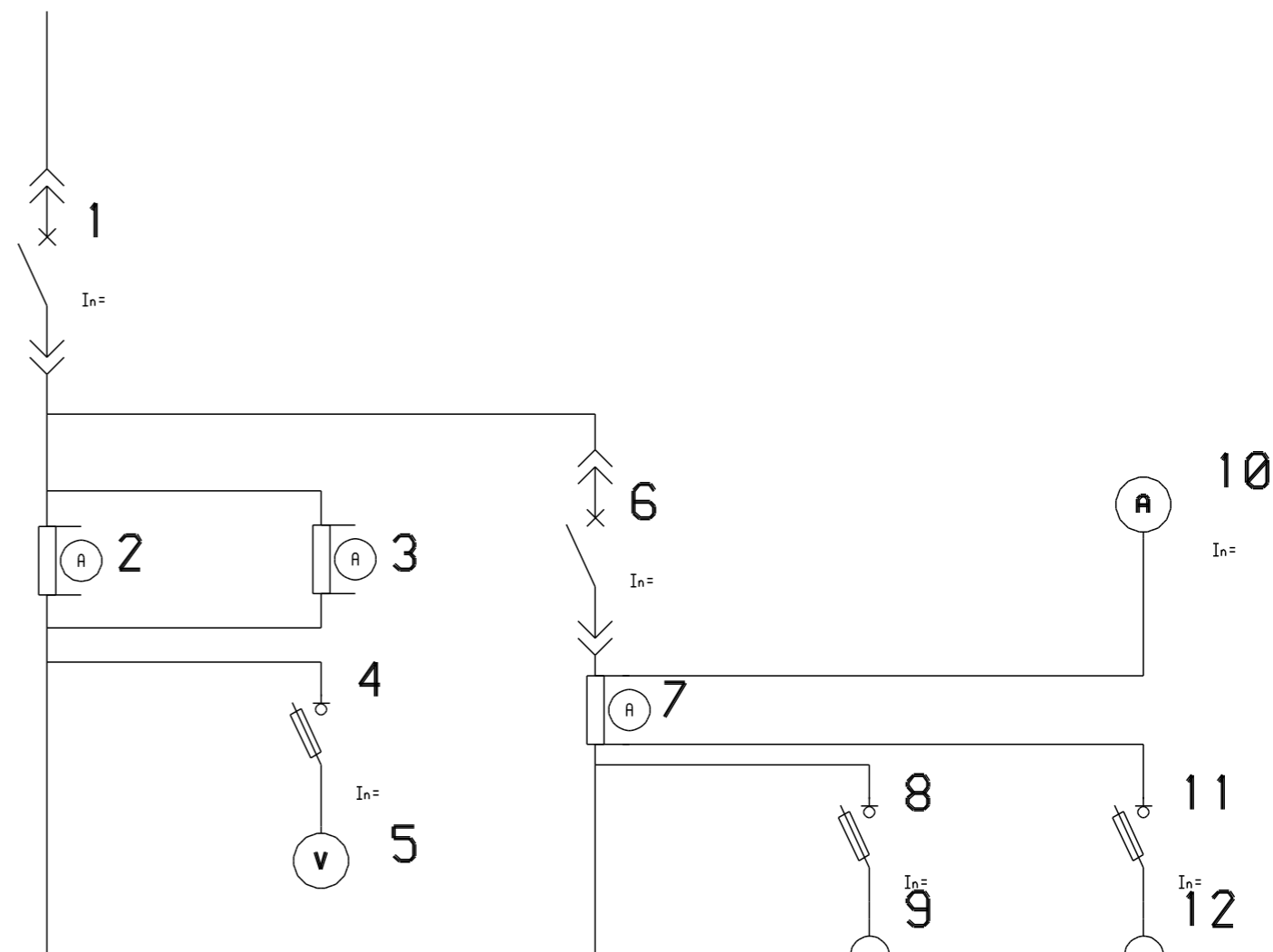
### PROMX\QSFX\QSFX\QSFX\QFX



PROMX\QSFX\QSFX\QSFX\QFX - 5 MODULU

PR<QM>RA2\QSFV

### PR<QM>RA2\QSFV\<QM>RA\OSFZ\PA\OSFZ



PR<QM>RA2\QSFV\<QM>RA\OSFZ\PA\OSFZ - 5 MODULU

PRQMX

PRQM\QF

QMFUX

PR<QM>\TVV\QTAT

PRKMIKQM\FU\FU

PRKM2QM\FU2\FU

PROMX

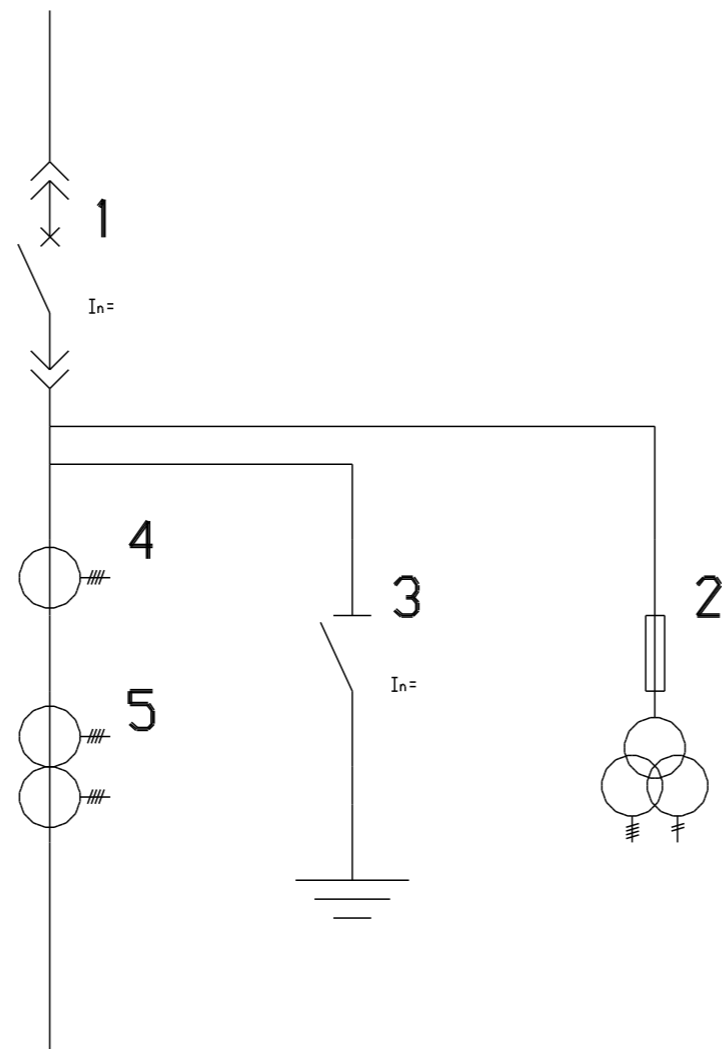
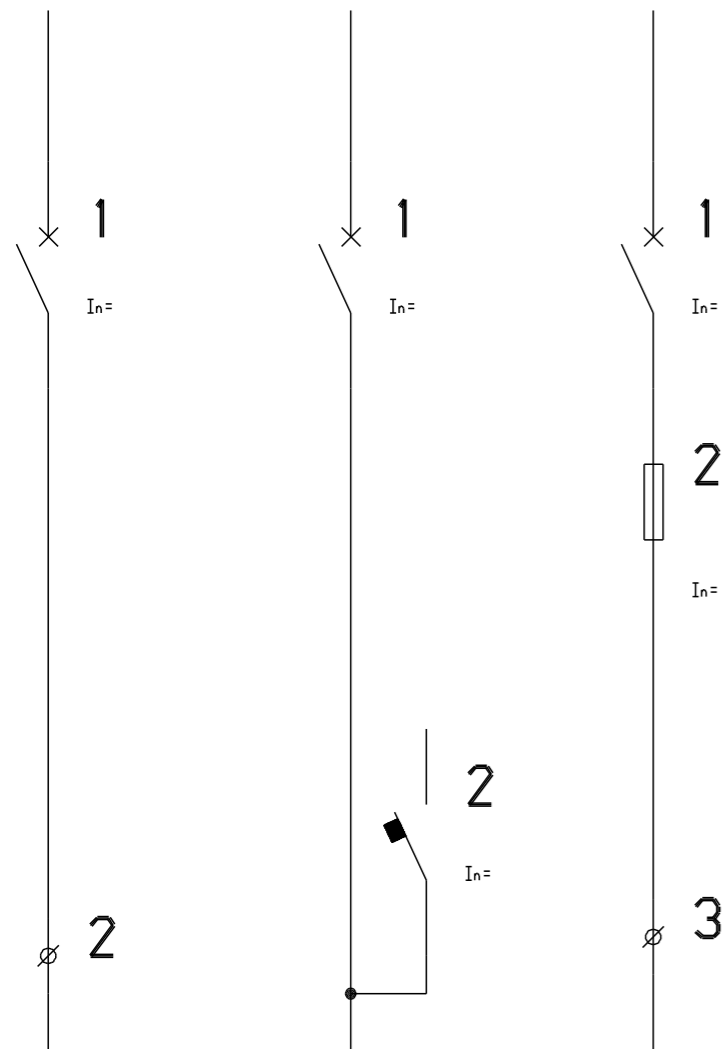
PROM\QF

QMFUX

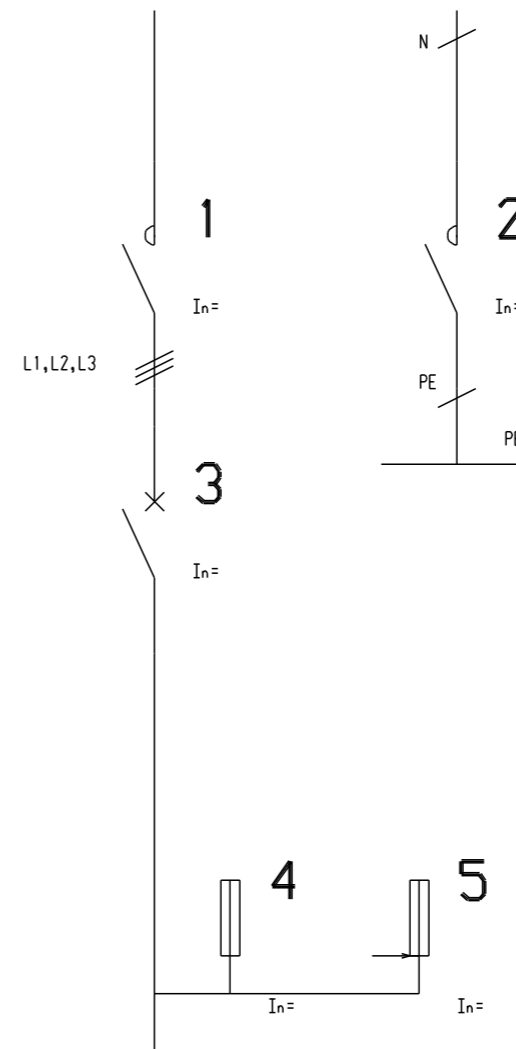
PR<QM>\TVV\QTATAA

PRKMIKQM\FU\FUS

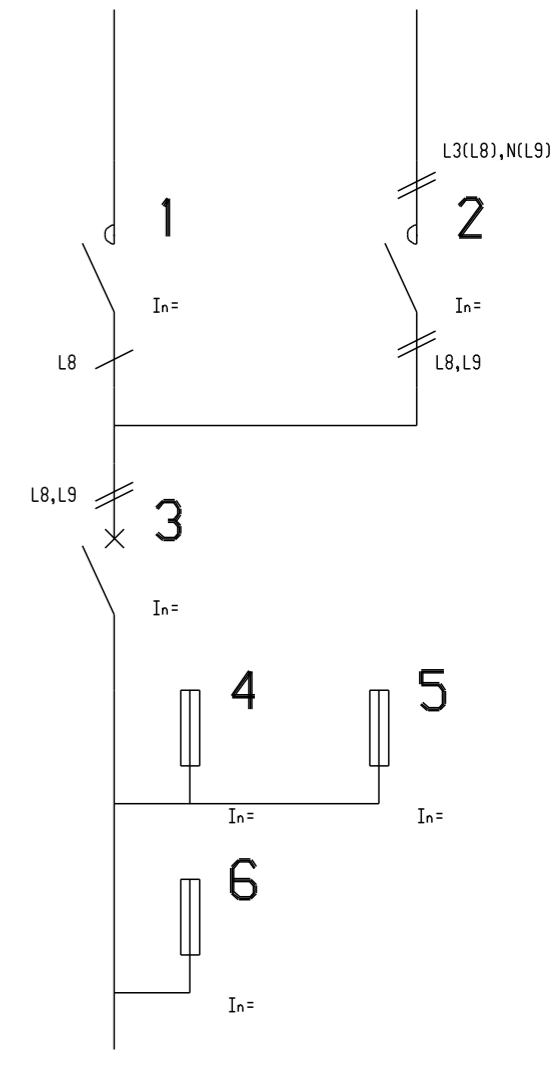
PRKM2QM\FU2\FU



PR<QM>\TVV\QTATAA - 2 MODULY



PRKMIKQM\FU\FUS - 2 MODULY



PRKM2QM\FU2\FU - 2 MODULY



PRQMND\FU

PRKMOMFU

PRTA1<QM>\FA\FA

PRKM2QM\FU\FUS

PRKM<QM>FUS\FUS

PRQMND2\FU

PRTA2<QM>\FA\FUS

PRQSQFRAGU\OVLQ

PROMND\FU

PRKMOMFU

PRTA1<QM>\FA\FA

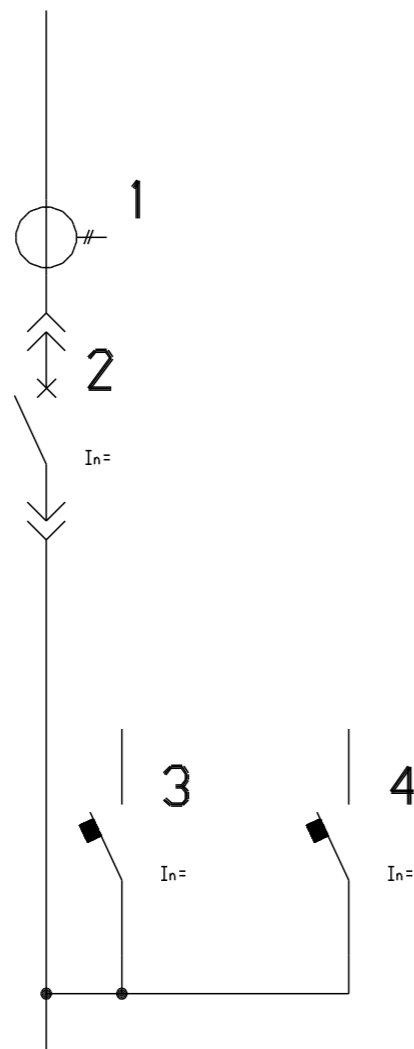
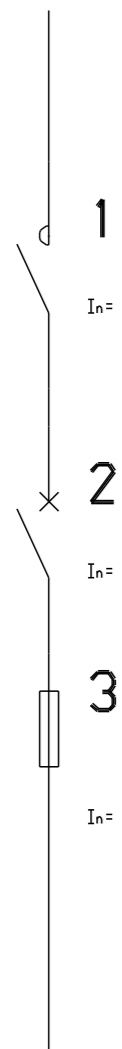
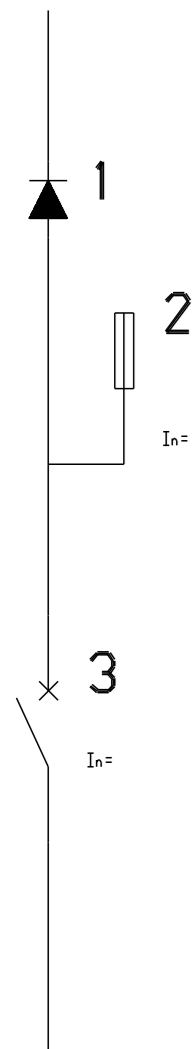
PRKM2QM\FU\FUS

PRKM<QM>FUS\FUS

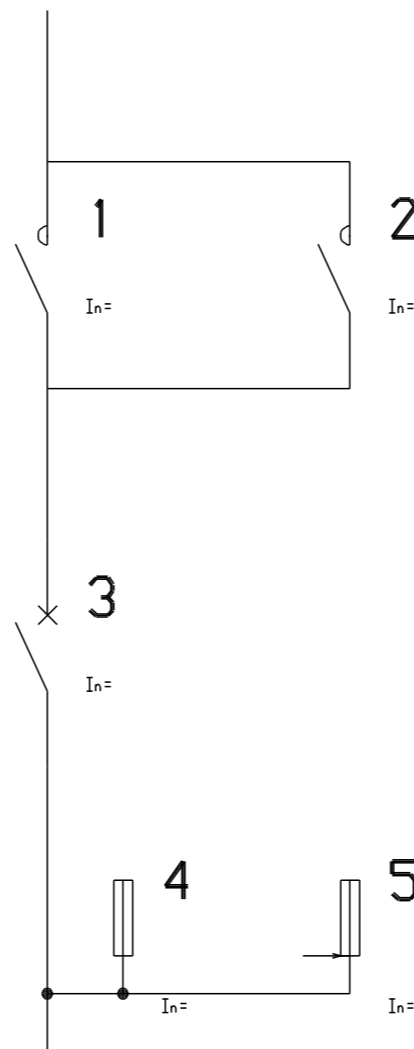
PROMND2\FU

PRTA2<QM>\FA\FUS

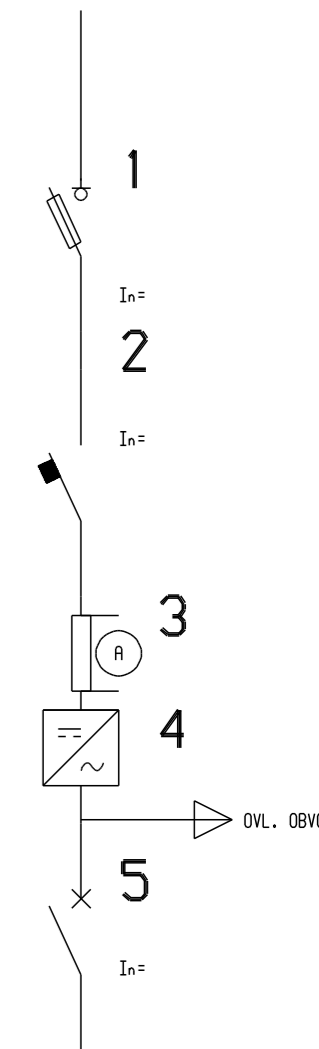
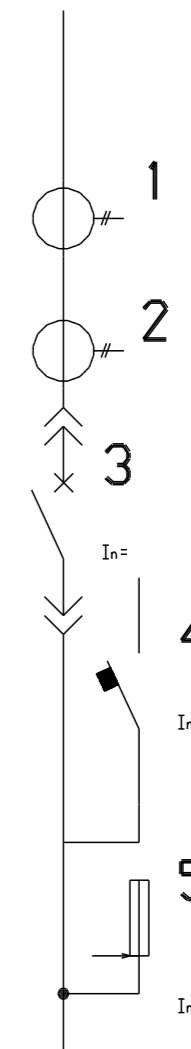
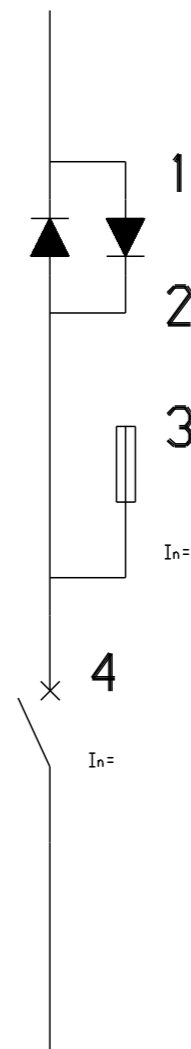
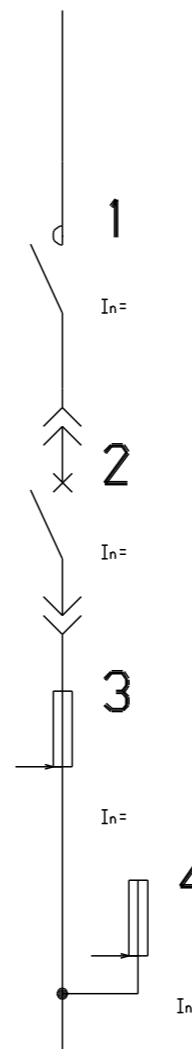
PRQSQFRAGU\OVLQ



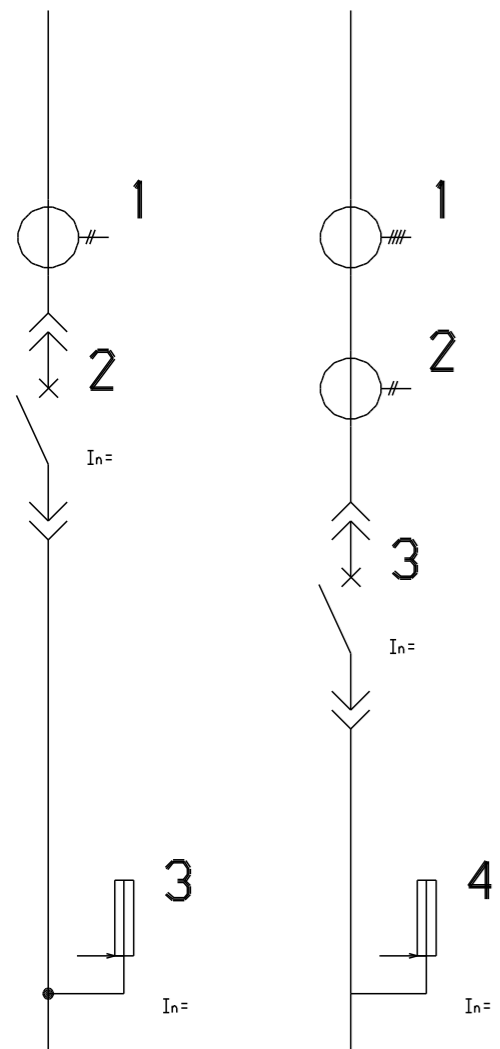
PRTA1<QM>\FA\FA - 2 MODULY



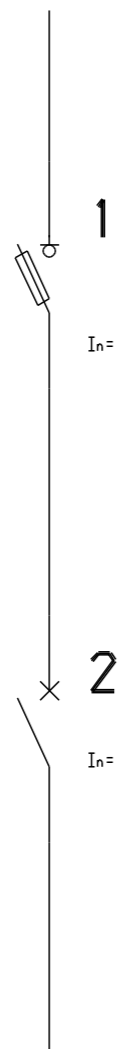
PRKM2QM\FU\FUS - 2 MODULY



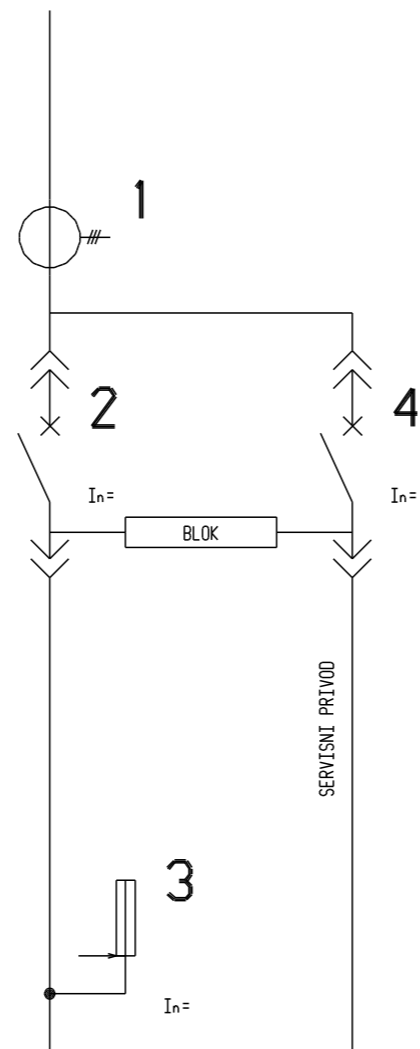
TA1<QM>\FUS | PRATA1<QM>\FUS |  
**TA1<QM>\FUS PRATA1<QM>\FUS**



QSQM  
**OSQM**

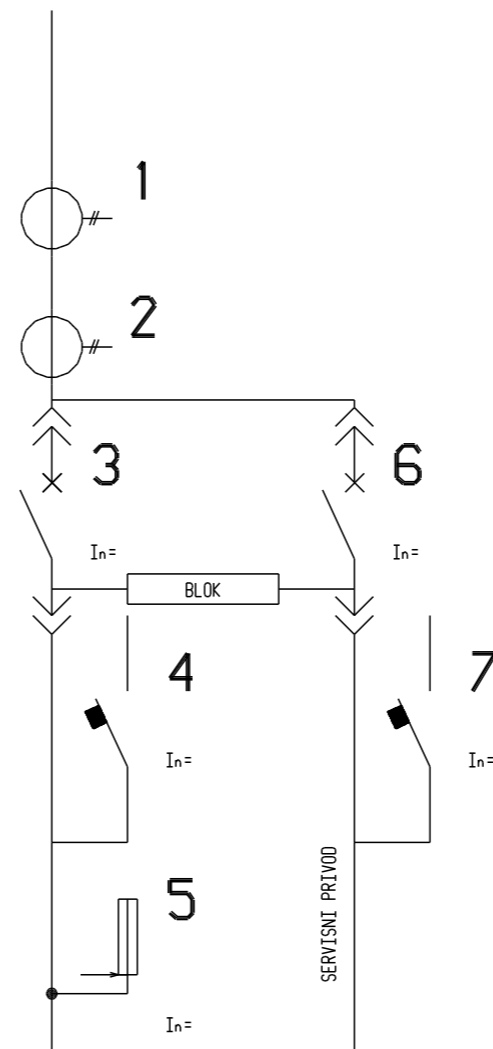


PRSTA2<QM>\FUS\  
**PRSTA2<QM>\FUS\  
 <QM>**



PRSTA2<QM>\FUS\  
 <QM> - 2 MODULY

PRSTA2<QM>\FAFUS\  
**PRSTA2<QM>\FAFUS\  
 <QM>\FA**

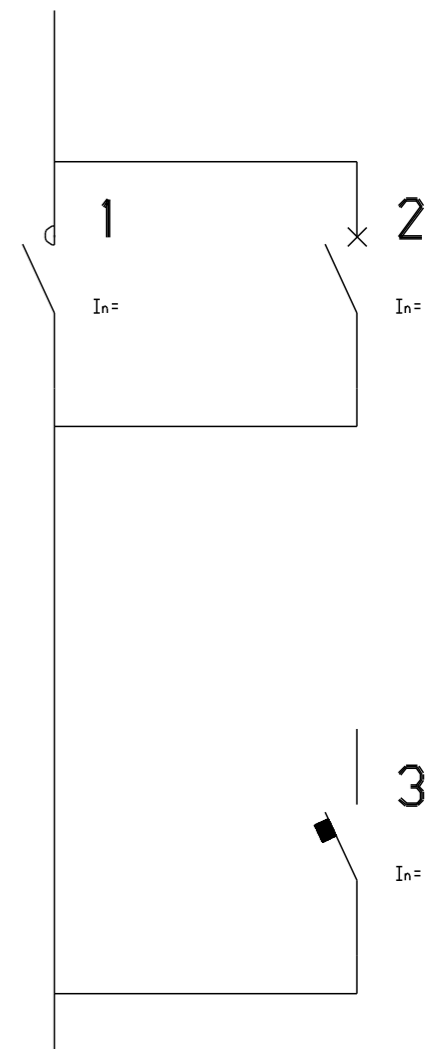


PRSTA2<QM>\FAFUS\  
 <QM>\FA - 2 MODULY

KMQM  
**KMQM**



PRKM\QM\QF  
**PRKM\QM\QF**



RA<QM> - 2 MODULY

PRKMQF\FU2 | PRKM\QM\QF2

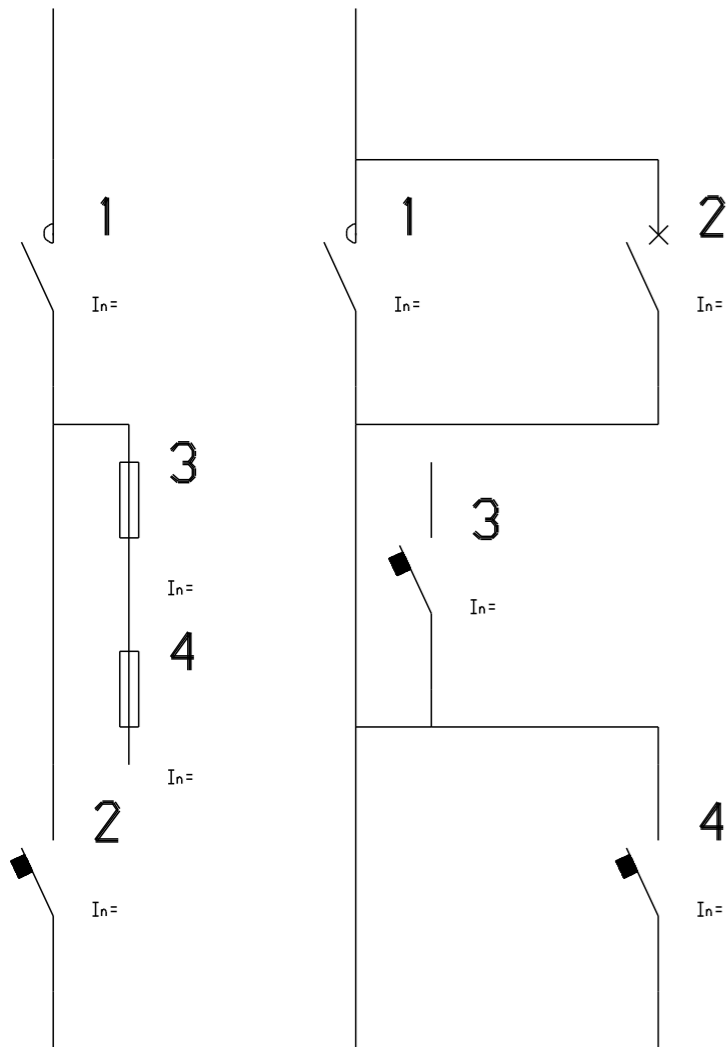
PRKMFUQM | PRTA1<QM>\QSF | PRKM\FUSQMX | PR2QM/QFVDQSK

PRRA<QM> | PRPAQM

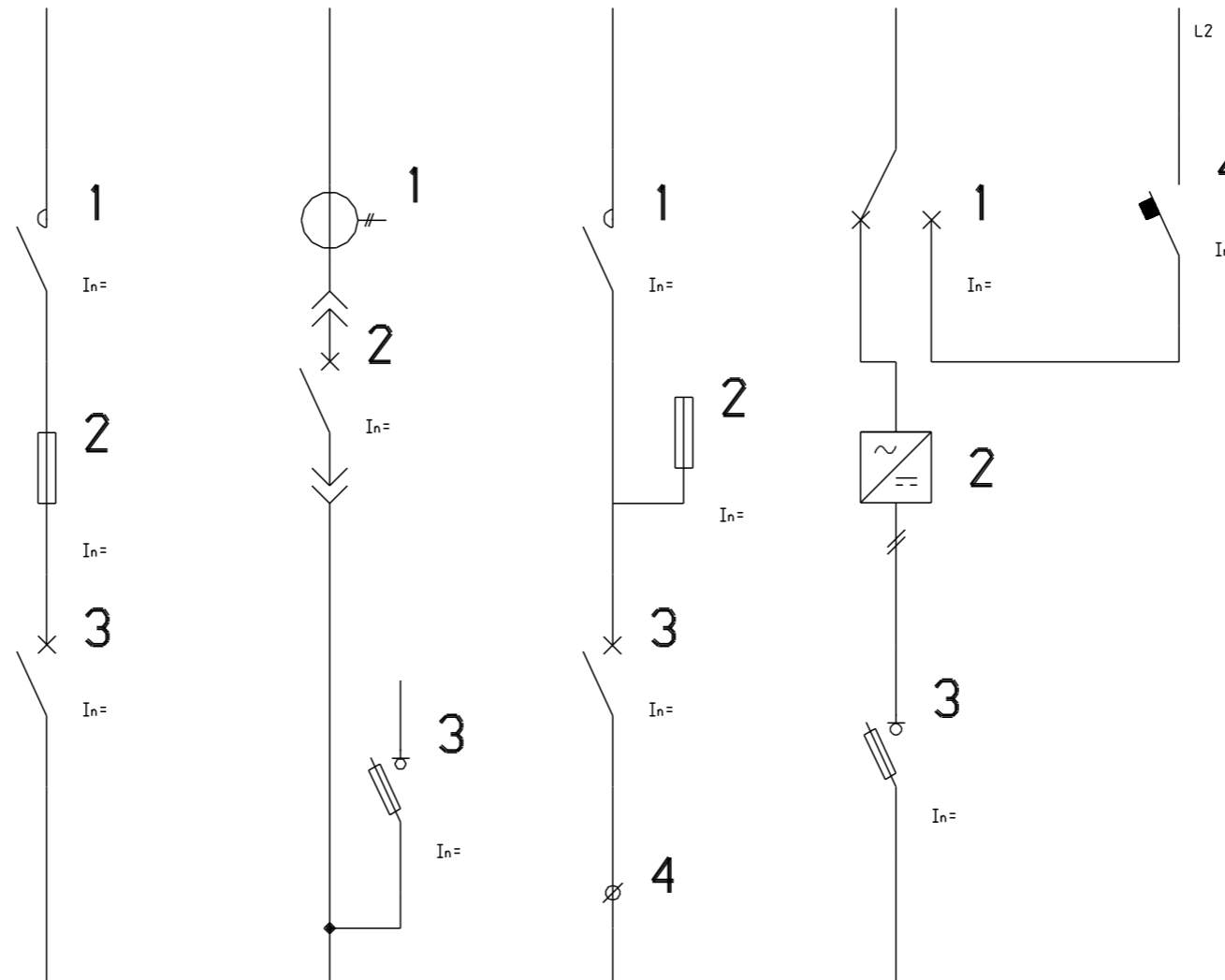
**PRKMQF\FU2** | **PRKM\QM\QF2**

**PRKMFUQM** | **PRTA1<QM>\QSF** | **PRKM\FUSQMX** | **PR2QM/QFVDQSK**

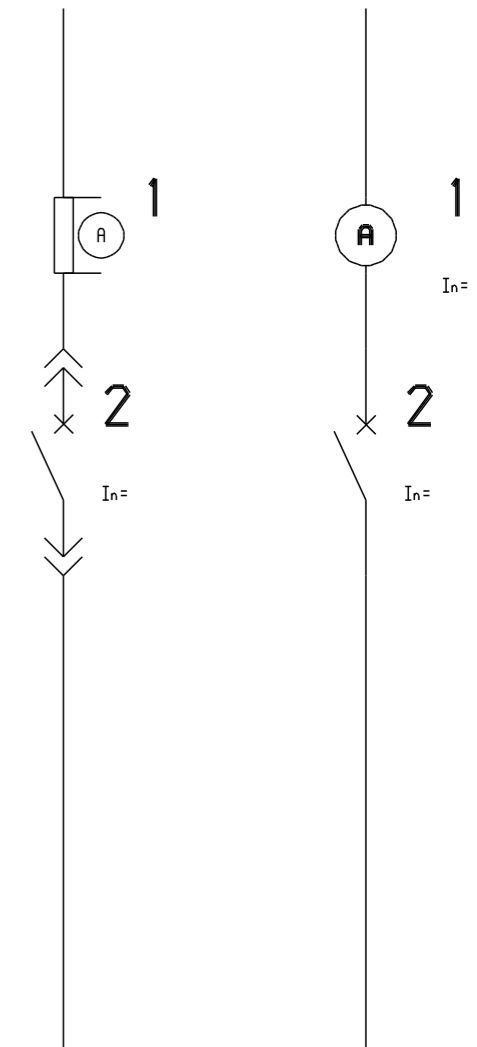
**PRRA<QM>** | **PRPAQM**



PRKM\QM\QF2 - 2 MODULY



PR2QM/QFVDQSK - 2 MODULY



PRTAQM\QSFFV\FU

PRTAQM\QSFFV\FU\FAOF

PROSFQM

PROSFQM

PROSFQSFQM

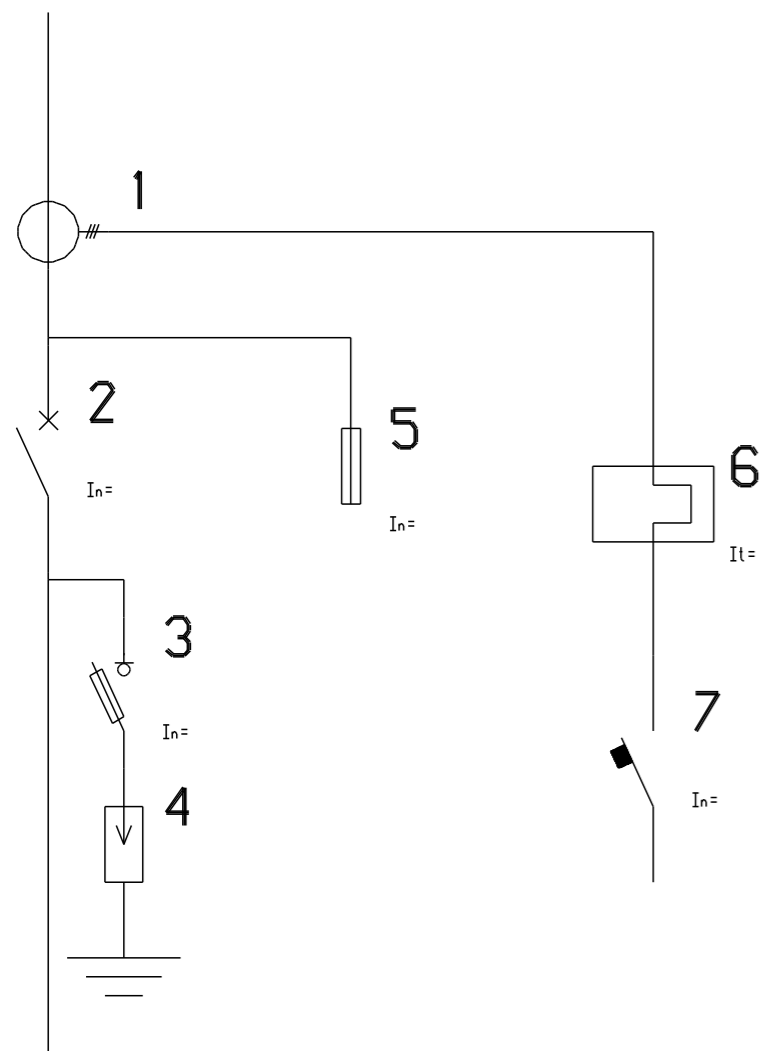
PROSFQSFQM

QMX

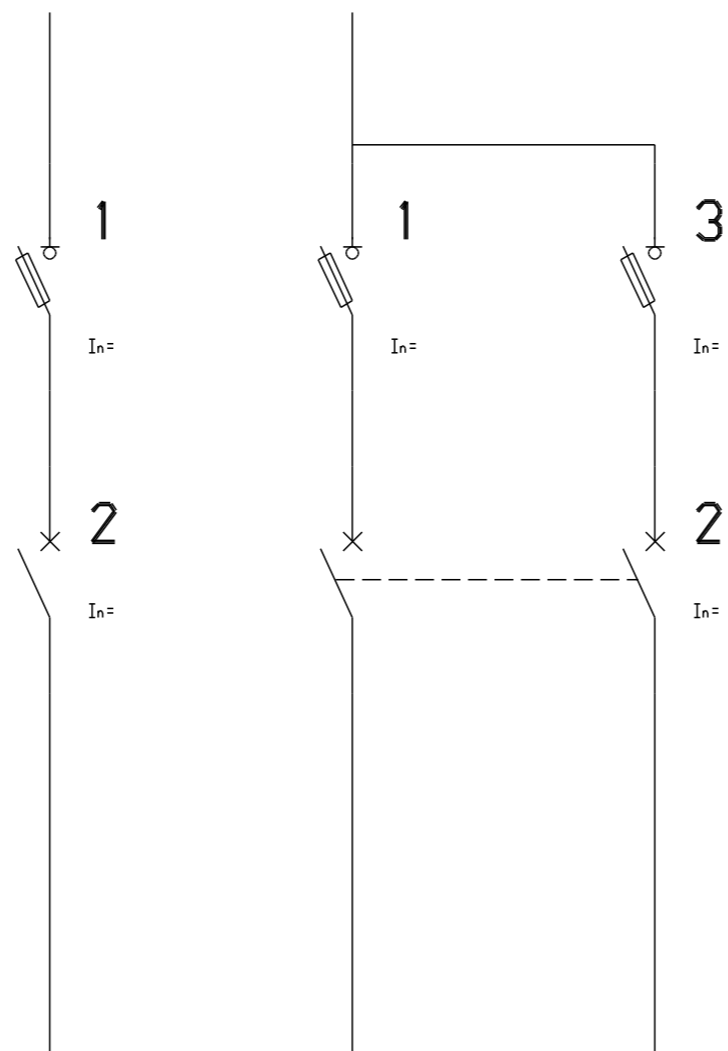
QMX

PR<QM>\TVVV\QTA

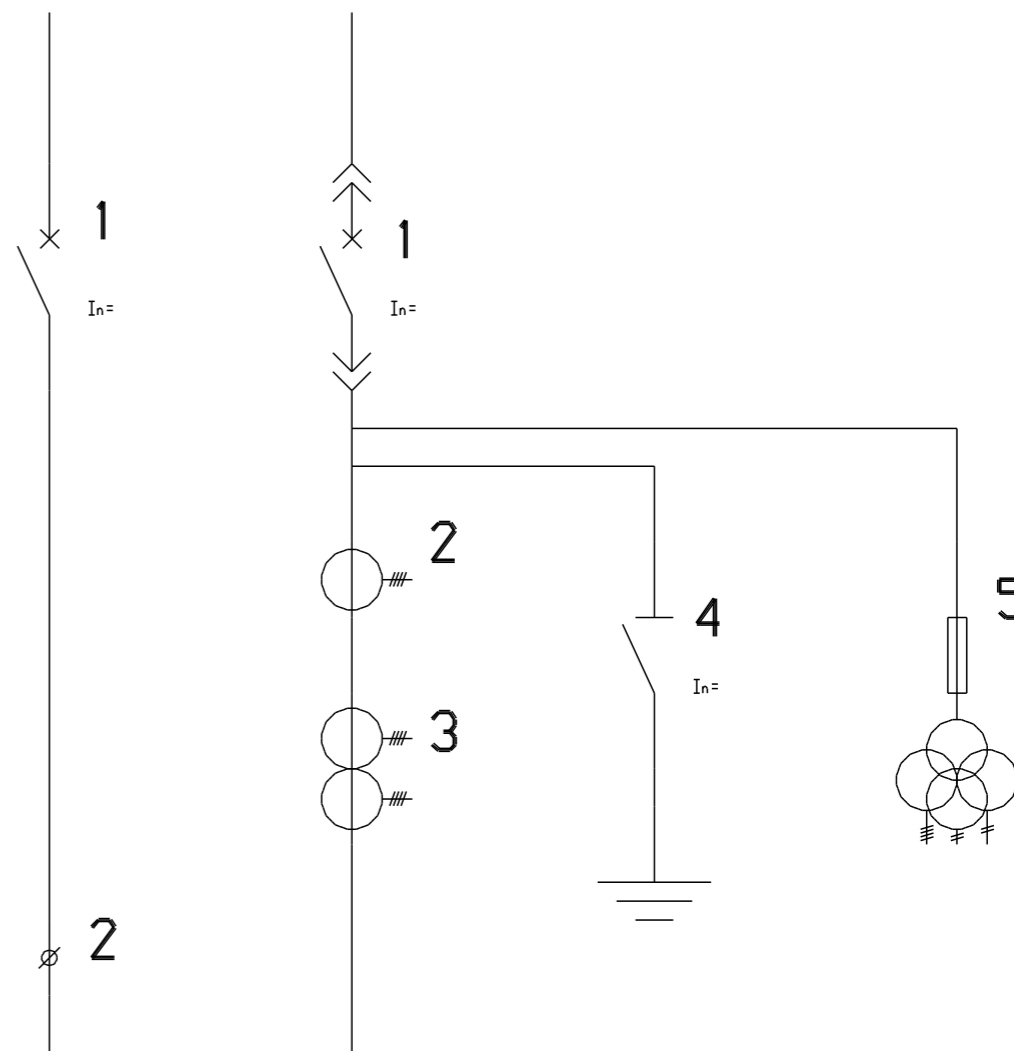
PR<QM>\TVVV\QATAA



PRTAQM\QSFFV\FU\FAOF - 3 MODULY



PROSFQSFQM - 2 MODULY



PRTAQM\QSFFV\FU\FAOF - 3 MODULY

PR<QM>\TVVV\QTA

PRQM\QFCK

PRQM\QF

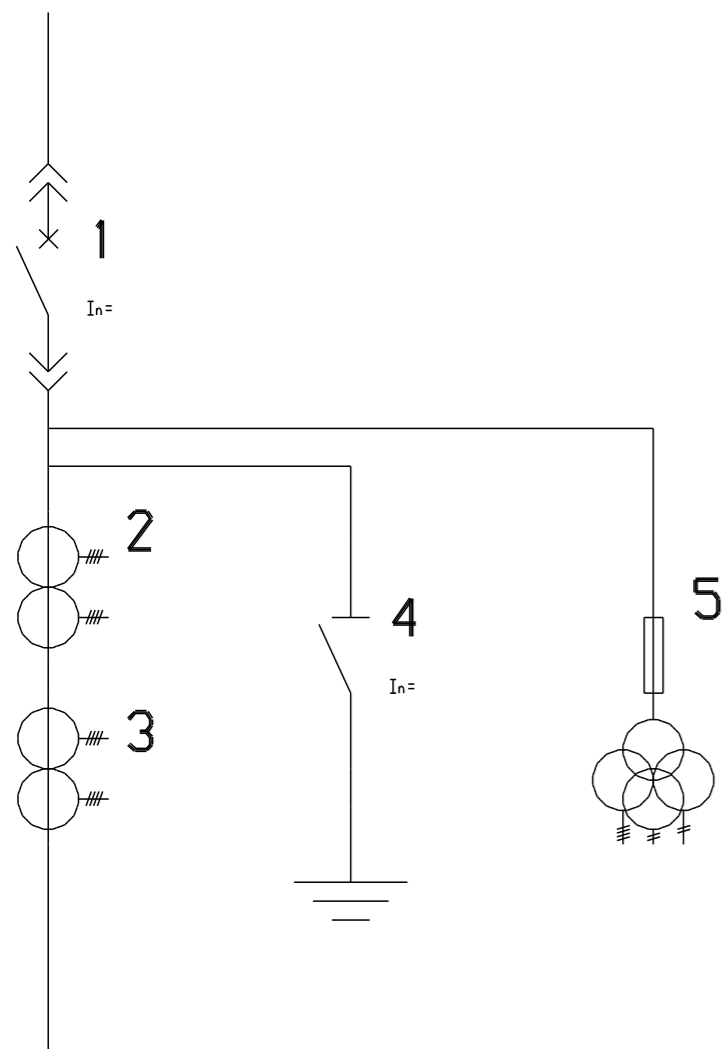
PRQM\QF\W\QF

### PR<QM>\TVVV\QTAATAA

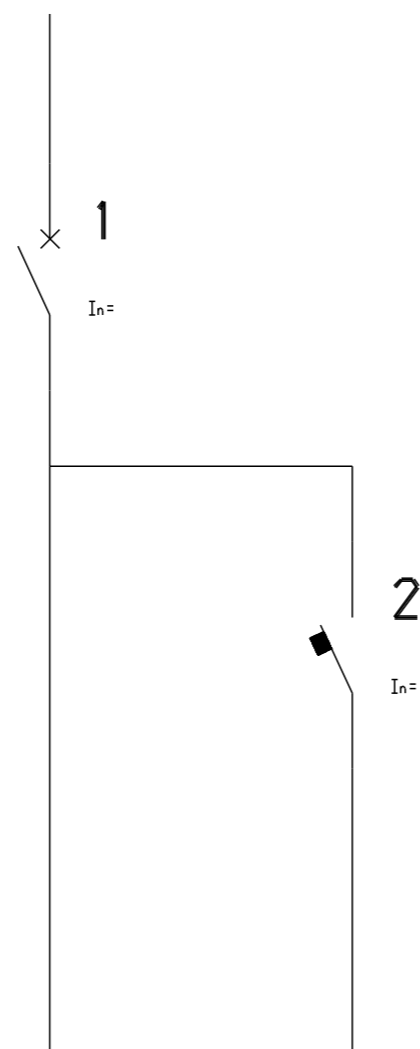
### PRQM\QFCK

### PRQM\QF

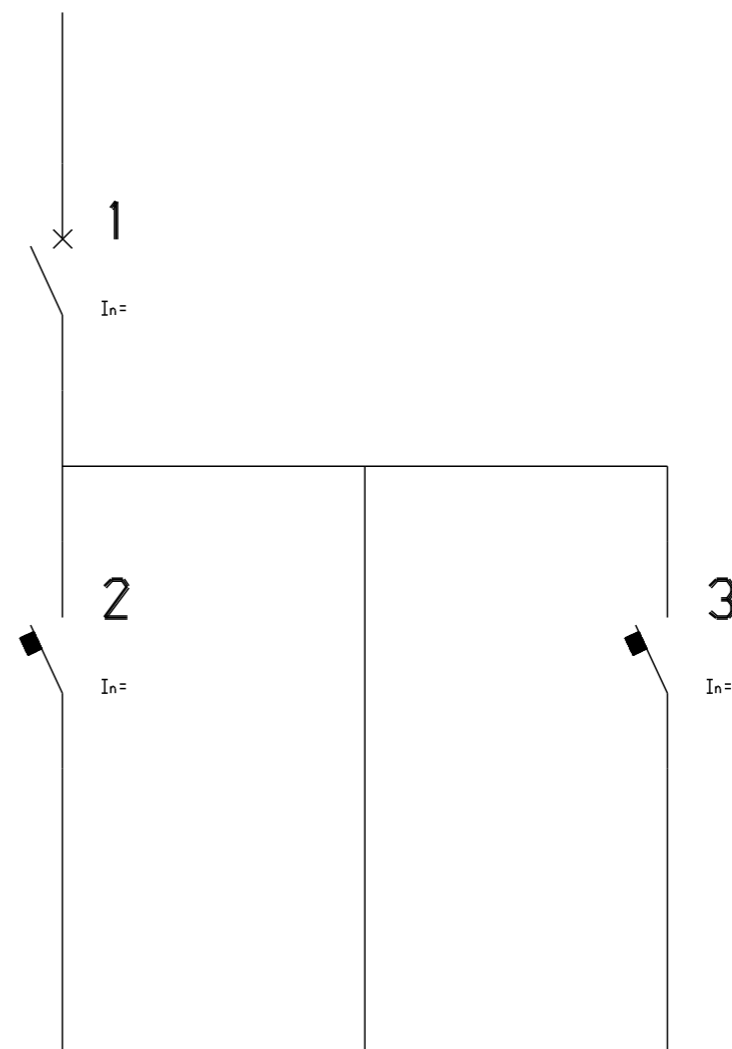
### PRQM\QF\W\QF



PRQMVQSFV\FU\FQDF - 3 MODULY



PRQM\QFCK - 2 MODULY



PRQM\QF\W\QF - 3 MODULY



PRTA1<QS>\FUS | PRKM3QM\FU3

**PRTA1<QS>\FUS PRKM3QM\FU3**

